

**SPOTSYLVANIA COUNTY VIRGINIA
2006 CONTROL SURVEY (RE-ADJUSTED 2008)**

JN 105-138

HORIZONTAL DATUM: NAD 83(2007)
VERTICAL DATUM: NAVD 88
COORDINATE SYSTEM: VIRGINIA STATE PLANE, NORTH ZONE
UNITS: U.S. SURVEY FOOT

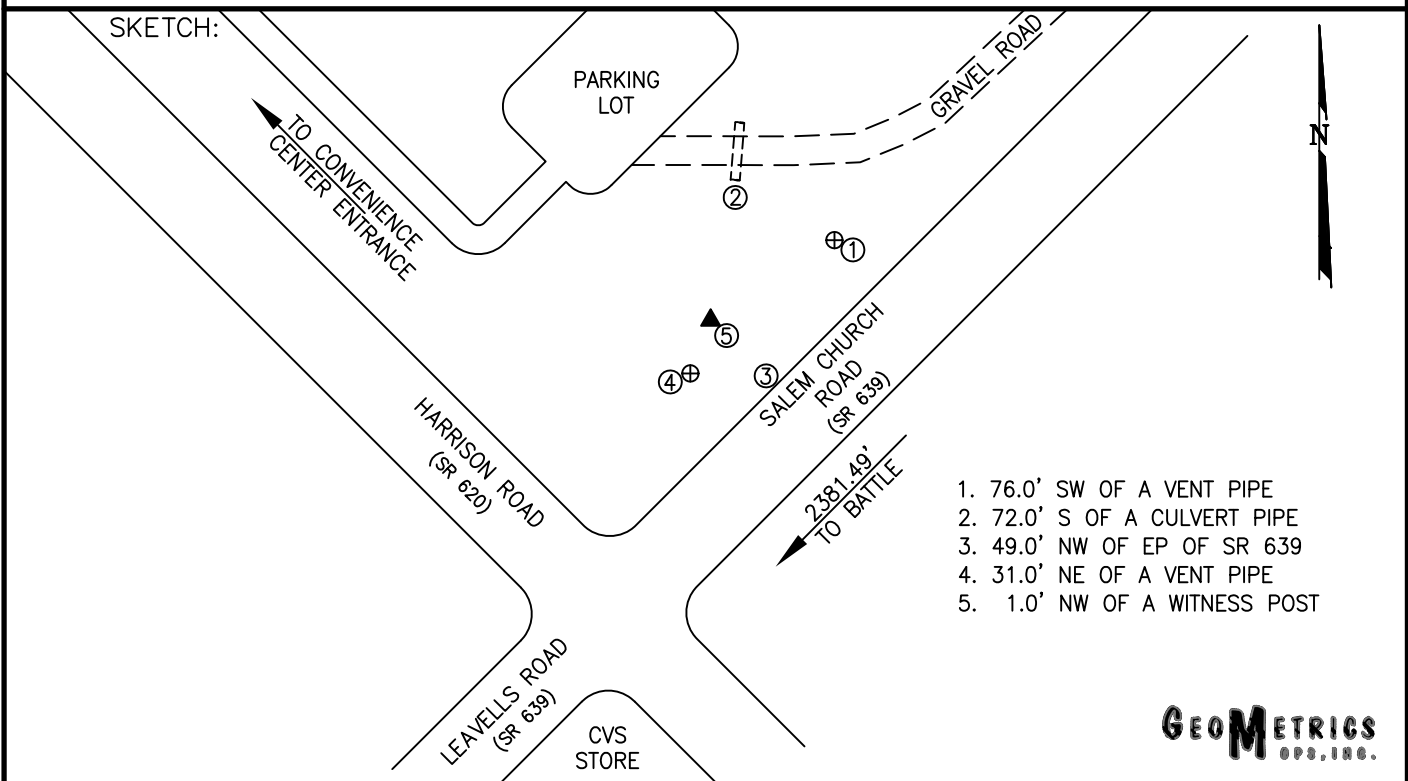
HORIZONTAL ORDER: FIRST
VERTICAL ORDER: THIRD

COUNTY	NAME OF STATION	YEAR
SPOTSYLVANIA	88 0104	2006
N: 6783087.00	LAT: 38° 16' 14.57973" N	COMBINED FACTOR: 0.99996659
E: 11759038.27	LONG: 077° 32' 17.49467" W	⊖ ANGLE: 0° 36' 01.0"
ELEVATION: 305.43' (ESTABLISHED BY GPS)		
DISTANCES AND DIRECTIONS TO AZIMUTH MARKS		
STATION	GROUND DISTANCE	TRUE AZIMUTH
BATTLE	2381.49'	195°55'54"

THE STATION IS LOCATED ABOUT 9.0 KM (5.6 MILES) NORTHEAST OF SPOTSYLVANIA, AND 7.1 KM (4.4 MILES) SOUTHWEST OF FREDERICKSBURG.

TO REACH THE STATION FROM THE INTERSECTION OF INTERSTATE 95 AND SR 3 (PLANK ROAD) (AT EXIT 130), GO WEST ON SR 3 FOR 2.4 KM (1.5 MILES) TO ITS INTERSECTION WITH SR 639 (SALEM CHURCH ROAD). TURN LEFT AND GO SOUTH ON SR 639 FOR 2.3 KM (1.4 MILES) TO ITS INTERSECTION WITH SR 620 (HARRISON ROAD). TURN RIGHT AND GO NORTHWEST ON SR 620 FOR 183 METERS (600 FEET) TO THE ENTRANCE TO A CONVENIENCE CENTER/CHANCELLOR LANDFILL AND CHANCELLOR CONSERVATION PARK. TURN RIGHT INTO THE CONVENIENCE CENTER AND TAKE THE FIRST RIGHT, FOLLOWING THE ACCESS ROAD FOR ABOUT 213 METERS (700 FEET) TO THE STATION ON THE RIGHT.

THE STATION IS A STANDARD VDOT ALUMINUM SURVEY DISK SET INTO CONCRETE, FLUSH WITH THE GROUND SURFACE AND STAMPED 88-0104.



DRAWN BY: BCL

CHECKED BY: DAR

DATE: 06/2006

APPROX. SCALE: 1" = 100'