

SPOTSYLVANIA COUNTY, VIRGINIA
 GEODETIC SURVEY CONTROL REVISED 10/2008

MAP PROJECTION: LAMBERT
 NAD 83(2007) * VIRGINIA STATE PLANE COORDINATE SYSTEM * NORTH ZONE

HORIZONTAL ORDER OF SURVEY: THIRD

| | | | | |
|---------------------------|-----------------------------|--|-------------------------|----------------|
| COUNTY | | NAME OF STATION | | YEAR |
| SPOTSYLVANIA | | 88-0101 | | 2000 |
| N: 6777524.55 | E: 11758308.73 | LAT.: 38°15'19.66994"N | LONG.: 77°32'27.37093"W | |
| GRID FACTOR: 0.9999682286 | COMBINED FACTOR: 0.99995922 | | ϕ ANGLE: +0°35'55" | |
| ESTABLISHED BY: VDOT | YEAR 1997 | DISTANCES AND DIRECTIONS TO REFERENCE MARKS AND PROMINENT OBJECTS OBSERVED AT STATION | | |
| | | OBJECT | DISTANCE-FT. | MAG. AZIMUTH |
| VERTICAL DATUM | NAVD 88 | 88-0102 | 836.060 m | N 7° 26' 04" E |
| ELEVATION (FT.) | 295.15 | | | |
| VERTICAL ORDER: | THIRD | | | |

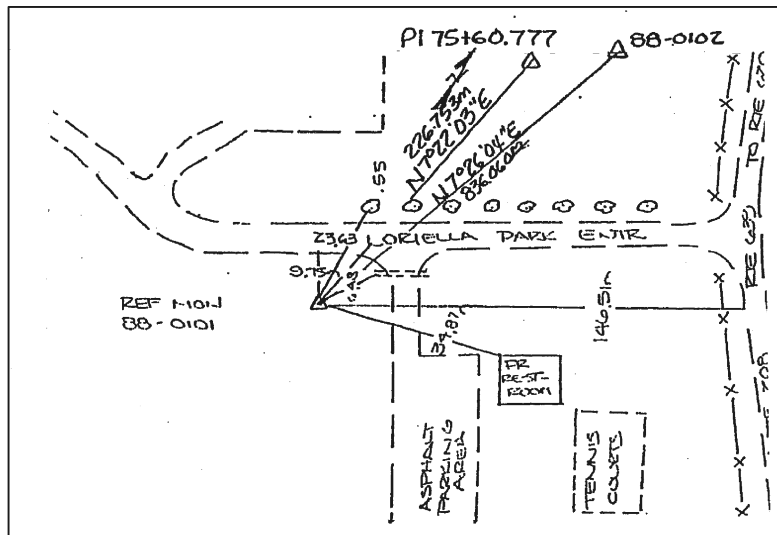
DESCRIPTION OF STATION:

Standard metal VDOT disk, stamped 88-0101, set in concrete flush with the ground.

To reach this monument from the intersection of Rt. 208 (Courthouse Road) and Rt. 639 (Leavells Road), proceed north on Rt. 639 (Leavells Road) 1.15 miles to the entrance of Loriella Park. Monument is 146.61 meters left of the edge of pavement of Rt. 639 (Leavells Road).

Monument might be disturbed or destroyed due to road construction.

SKETCH OF STATION:



NOTE:

COORDINATE AND ELEVATION DATA LISTED ABOVE IS CONVERTED TO NAD83/93 AND NAVD88 BY USING CORPSCON. IN 2008 THE COORDINATES WERE CONVERTED TO NAD83(2007) BY APPLYING A COMPUTED SHIFT.

GEOMETRICS
 OPS, INC.

236 CAMBRIDGE STREET
 FREDERICKSBURG, VIRGINIA
 (540) 372-3499

| | |
|------------------|---------------|
| PREPARED BY: KRO | DATE: JAN '01 |
| CHECKED BY: DAR | DATE: JAN '01 |