

SPOTSYLVANIA COUNTY, VIRGINIA  
 GEODETIC SURVEY CONTROL REVISED 10/2008

MAP PROJECTION: LAMBERT  
 NAD 83(2007) \* VIRGINIA STATE PLANE COORDINATE SYSTEM \* NORTH ZONE

HORIZONTAL ORDER OF SURVEY: THIRD

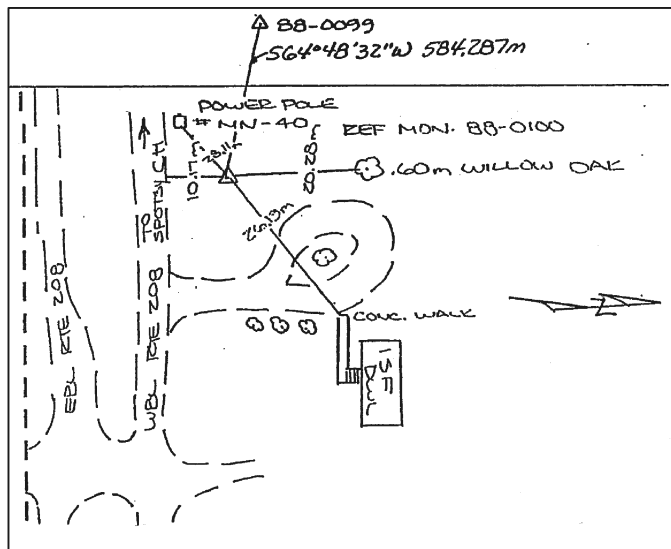
COUNTY		NAME OF STATION		YEAR
SPOTSYLVANIA		88-0100		2000
N: 6774447.92	E: 11764383.81	LAT.: 38°14'48.62296"N	LONG.: 77°31'11.62428"W	
GRID FACTOR: 0.9999691845	COMBINED FACTOR: 0.99996180		ϕ ANGLE: +0°36'42"	
ESTABLISHED BY: VDOT	YEAR 1997	DISTANCES AND DIRECTIONS TO REFERENCE MARKS AND PROMINENT OBJECTS OBSERVED AT STATION		
		OBJECT	DISTANCE-FT.	MAG. AZIMUTH
VERTICAL DATUM	NAVD 88	88-0099	584.287 m	S 64° 48' 32" W
ELEVATION (FT.)	261.16			
VERTICAL ORDER:	THIRD			

DESCRIPTION OF STATION:

Standard metal VDOT disk stamped 88-0100, set in concrete, flush with the ground.

To reach this monument from Interstate 95 overpass at Rt. 208 (Courthouse Road), proceed west on Rt. 208 (Courthouse Road) 0.65 miles. Monument is 10.17 meters right of the edge of pavement of Route 208 (Courthouse Road) West Bound Lane (WBL).

SKETCH OF STATION:



THIS SURVEY DATA PREPARED  
 USING 1 meter = 39.37 inches

NOTE:

COORDINATE AND ELEVATION DATA LISTED ABOVE IS CONVERTED TO NAD83/93 AND NAVD88 BY USING CORPSCON. IN 2008 THE COORDINATES WERE CONVERTED TO NAD83(2007) BY APPLYING A COMPUTED SHIFT.

**GEOMETRICS**  
 GPS, INC.

236 CAMBRIDGE STREET  
 FREDERICKSBURG, VIRGINIA  
 (540) 372-3499

PREPARED BY: KRO	DATE: JAN '01
CHECKED BY: DAR	DATE: JAN '01