

SPOTSYLVANIA COUNTY, VIRGINIA

GEODETIC SURVEY CONTROL REVISED 10/2008

MAP PROJECTION: LAMBERT

HORIZONTAL ORDER OF SURVEY: THIRD

NAD 83(2007) \* VIRGINIA STATE PLANE COORDINATE SYSTEM \* NORTH ZONE

COUNTY		NAME OF STATION		YEAR
SPOTSYLVANIA		88-0091		2000
N: 6790869.25	E: 11763138.81	LAT.: 38°17'31.07981"N	LONG.: 77°31'25.04074"W	
GRID FACTOR: 0.9999644313	COMBINED FACTOR: 0.99995651		⊕ ANGLE: +0°36'34"	
ESTABLISHED BY: VDOT	YEAR 1995	DISTANCES AND DIRECTIONS TO REFERENCE MARKS AND PROMINENT OBJECTS OBSERVED AT STATION		
		OBJECT	DISTANCE-FT.	MAG. AZIMUTH
VERTICAL DATUM NAVD 88				
ELEVATION (FT.) 272.39				
VERTICAL ORDER: THIRD				

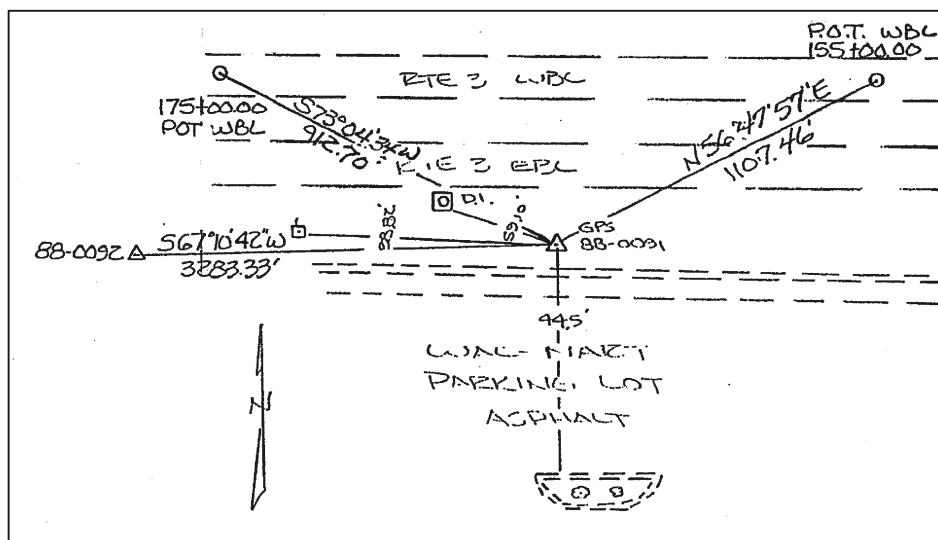
DESCRIPTION OF STATION:

Standard metal VDOT disk stamped 88-0091 set concrete .10' below ground surface.

To reach the monument from I-95 overpass, proceed west on Rt. 3, 1.025 miles. Monument is 140.73' left of station 165+97.97 POT West Bound Lane (WBL).

Azimuth monument 88-0092 has been destroyed. Wal Mart now Gander Mountain.

SKETCH OF STATION:



THIS SURVEY DATA PREPARED  
USING 1 meter = 39.37 inches

PREPARED BY: KRO	DATE: JAN '01
CHECKED BY: DAR	DATE: JAN '01

NOTE:

COORDINATE AND ELEVATION DATA LISTED ABOVE IS CONVERTED TO NAD83/93 AND NAVD88 BY USING CORPSCON. IN 2008 THE COORDINATES WERE CONVERTED TO NAD83(2007) BY APPLYING A COMPUTED SHIFT.

**GEOMETRICS**  
OPS, INC.  
236 CAMBRIDGE STREET  
FREDERICKSBURG, VIRGINIA  
(540) 372-3499