

# SPOTSYLVANIA COUNTY VIRGINIA 2003 CONTROL SURVEY

JN 103-009

HORIZONTAL DATUM: NAD 83(2007) (REVISED 8-08)  
 VERTICAL DATUM: NAVD 88  
 COORDINATE SYSTEM: VIRGINIA STATE PLANE, NORTH ZONE  
 UNITS: U.S. SURVEY FOOT

HORIZONTAL ORDER: FIRST  
 VERTICAL ORDER: THIRD

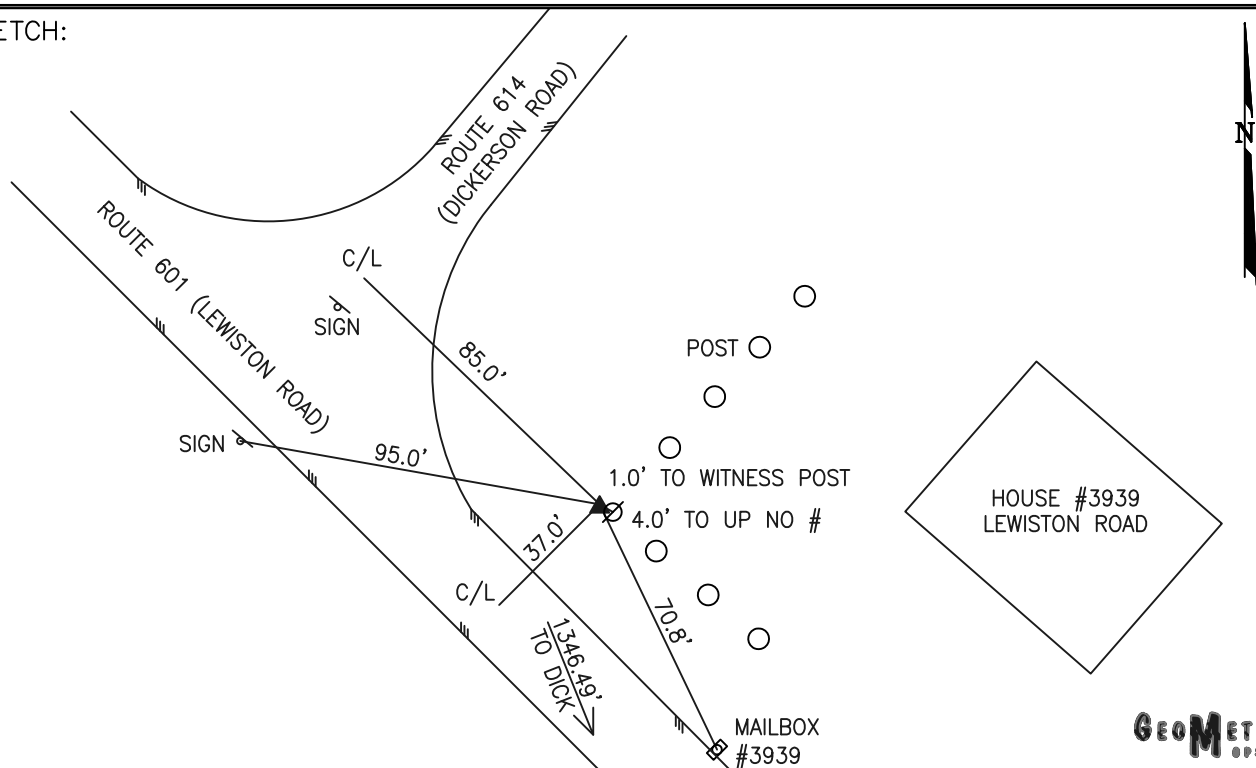
COUNTY	NAME OF STATION	YEAR
SPOTSYLVANIA	22 AFK	2003
N: 6708913.67	LAT: 38° 04' 06.71550" N	COMBINED FACTOR: 0.99998353
E: 11701200.68	LONG: 77° 44' 30.40993" W	∅ ANGLE: 0° 28' 24"
ELEVATION: 324.84' (ESTABLISHED BY USGS)		
DISTANCES AND DIRECTIONS TO AZIMUTH MARKS		
STATION	GROUND DISTANCE	TRUE AZIMUTH
DICK	1346.49'	157° 10' 49"

THE STATION IS LOCATED IN SOUTHWESTERN SPOTSYLVANIA COUNTY, VIRGINIA, ABOUT 12 MILES SOUTHWEST OF THE SPOTSYLVANIA COUNTY COURTHOUSE AND IS IN FRONT OF HOUSE NUMBER, 3939 LEWISTON ROAD.

TO REACH THE STATION FROM THE INTERSECTION OF STATE ROUTE 606 (MORRIS ROAD) AND US HIGHWAY 1 (JEFFERSON DAVIS HIGHWAY) IN THORNBURG GO WESTERLY ON STATE ROUTE 606 FOR 7.2 KM (4.5 MILES) TO AN INTERSECTION. CONTINUE AND GO NORTHWESTERLY ON STATE ROUTE 208 (COURTHOUSE ROAD) FOR 3.7 KM (2.3 MILES) TO STATE ROUTE 648 (BLOCKHOUSE ROAD). CONTINUE NORTHWESTERLY ON STATE ROUTE 208 FOR 1.9 KM (1.2 MILES) TO AN INTERSECTION. TURN LEFT AND GO SOUTHWESTERLY ON STATE ROUTE 208 FOR 6.4 KM (4.0 MILES) TO STATE ROUTE 602 (MASSEY ROAD) AND A SHELL GAS STATION ON THE RIGHT. CONTINUE SOUTHWESTERLY ON STATE ROUTE 208 FOR 5.3 KM (3.3 MILES) TO AN INTERSECTION. TURN LEFT AND GO SOUTHEASTERLY ON STATE ROUTE 601 (LEWISTON ROAD) FOR 6.0 KM (3.7 MILES) TO STATE ROUTE 614 (DICKERSON ROAD) AND THE STATION ON THE LEFT. STATION 22 AFK IS INTERVISIBLE WITH STATION DICK.

THE STATION IS A 3-1/2 INCH U.S. GEOLOGICAL SURVEY ALUMINUM SURVEY DISK SET IN A 6 INCH SQUARE CONCRETE MONUMENT FLUSH WITH THE GROUND SURFACE AND STAMPED 22 AFK 1964 326.

SKETCH:



DRAWN BY: BCL

CHECKED BY: LLR

DATE: 06/2003

APPROX. SCALE: 1" = 50'