

**SPOTSYLVANIA COUNTY VIRGINIA  
2005 CONTROL SURVEY**

JN 104-085

HORIZONTAL DATUM: NAD 83(2007) (REVISED 8-08)  
 VERTICAL DATUM: NAVD 88  
 COORDINATE SYSTEM: VIRGINIA STATE PLANE, NORTH ZONE  
 UNITS: U.S. SURVEY FOOT

HORIZONTAL ORDER: FIRST  
 VERTICAL ORDER: THIRD

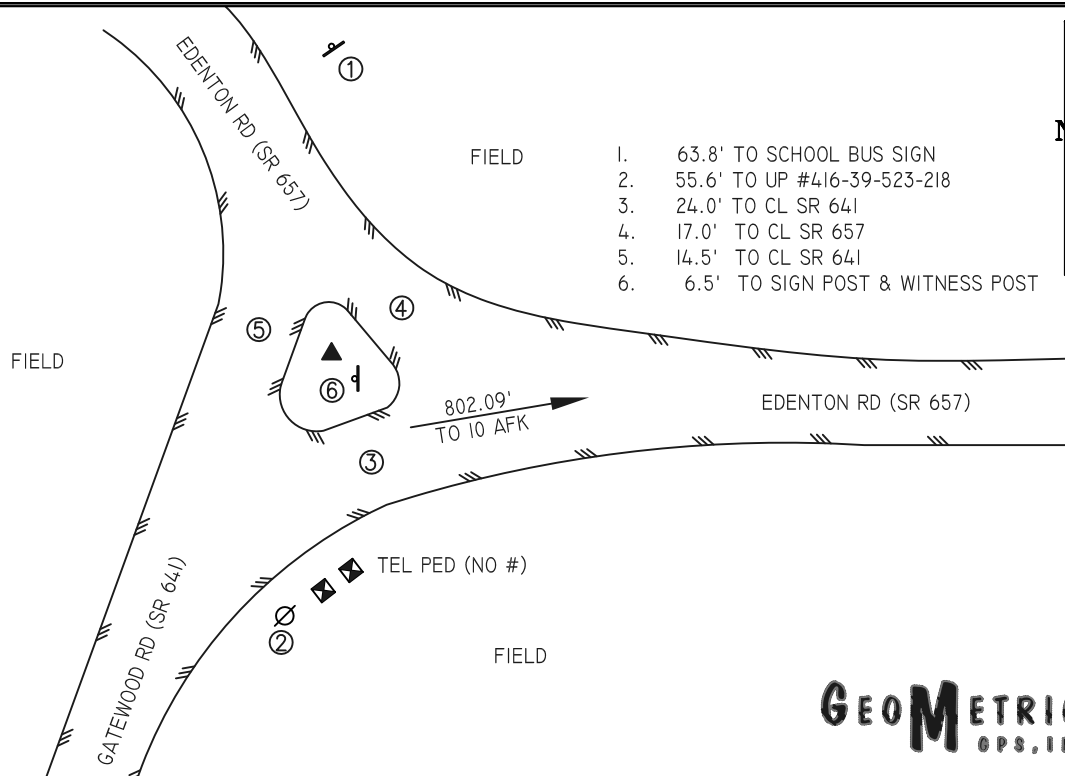
COUNTY	NAME OF STATION	YEAR
SPOTSYLVANIA	10 AFK AZ	2005
N: 6714133.87	LAT: 38° 04' 56.53061" N	COMBINED FACTOR: 0.99999171
E: 11722099.59	LONG: 077° 40' 08.49686" W	∅ ANGLE: 0° 31' 07"
ELEVATION: 333.85' (ESTABLISHED BY GPS)		
DISTANCES AND DIRECTIONS TO AZIMUTH MARKS		
STATION	GROUND DISTANCE	TRUE AZIMUTH
10 AFK	802.09	80°49'13"

THE STATION IS LOCATED IN SPOTSYLVANIA COUNTY, VIRGINIA, APPROXIMATELY 21.9 KM (13.6 MILES) NORTHEAST OF LOUISA, AND 20.9 KM (13.0 MILES) SOUTHWEST OF THORNBURG.

TO REACH THE STATION FROM THE INTERSECTION OF US HIGHWAY 1 (JEFFERSON DAVIS HIGHWAY) AND SR 606 (MORRIS ROAD) AT THORNBURG, GO WEST ON SR 606 FOR 7.2 KM (4.5 MILES) TO ITS INTERSECTION WITH SR 738 (PARTLOW ROAD). TURN LEFT AND GO SOUTH ON SR 738 FOR 7.9 KM (4.9 MILES) TO ITS INTERSECTION WITH SR 614 (DICKERSON ROAD). CONTINUE SOUTH ON SR 738 FOR 2.7 KM (1.7 MILES) TO ITS INTERSECTION WITH SR 657 (EDENTON ROAD). TURN RIGHT AND GO EAST ON SR 657 FOR 0.3 KM (0.2 MILE) TO ITS INTERSECTION WITH SR 641 (GATEWOOD ROAD) AND THE STATION IS AT THE MEDIAN OF THE INTERSECTION.

THE STATION IS A SPOTSYLVANIA COUNTY, VA ALUMINUM SURVEY DISK SET INTO A Poured IN PLACE CONCRETE MONUMENT 10 INCHES IN DIAMETER, FLUSH WITH THE GROUND SURFACE AND STAMPED 10 AFK AZ 2005. STATION 10 AFK AZ IS INTER-VISIBLE WITH STATION 10 AFK.

SKETCH:



**GEOMETRICS**  
OPS, INC.

DRAWN BY: BCL

CHECKED BY: DAR

DATE: 06/2005

APPROX. SCALE: 1" = 40'