

**SPOTSYLVANIA COUNTY VIRGINIA  
2005 CONTROL SURVEY (RE-ADJUSTED 2008)**

JN 104-085

HORIZONTAL DATUM: NAD 83(2007)  
 VERTICAL DATUM: NAVD 88  
 COORDINATE SYSTEM: VIRGINIA STATE PLANE, NORTH ZONE  
 UNITS: U.S. SURVEY FOOT

HORIZONTAL ORDER: FIRST  
 VERTICAL ORDER: THIRD

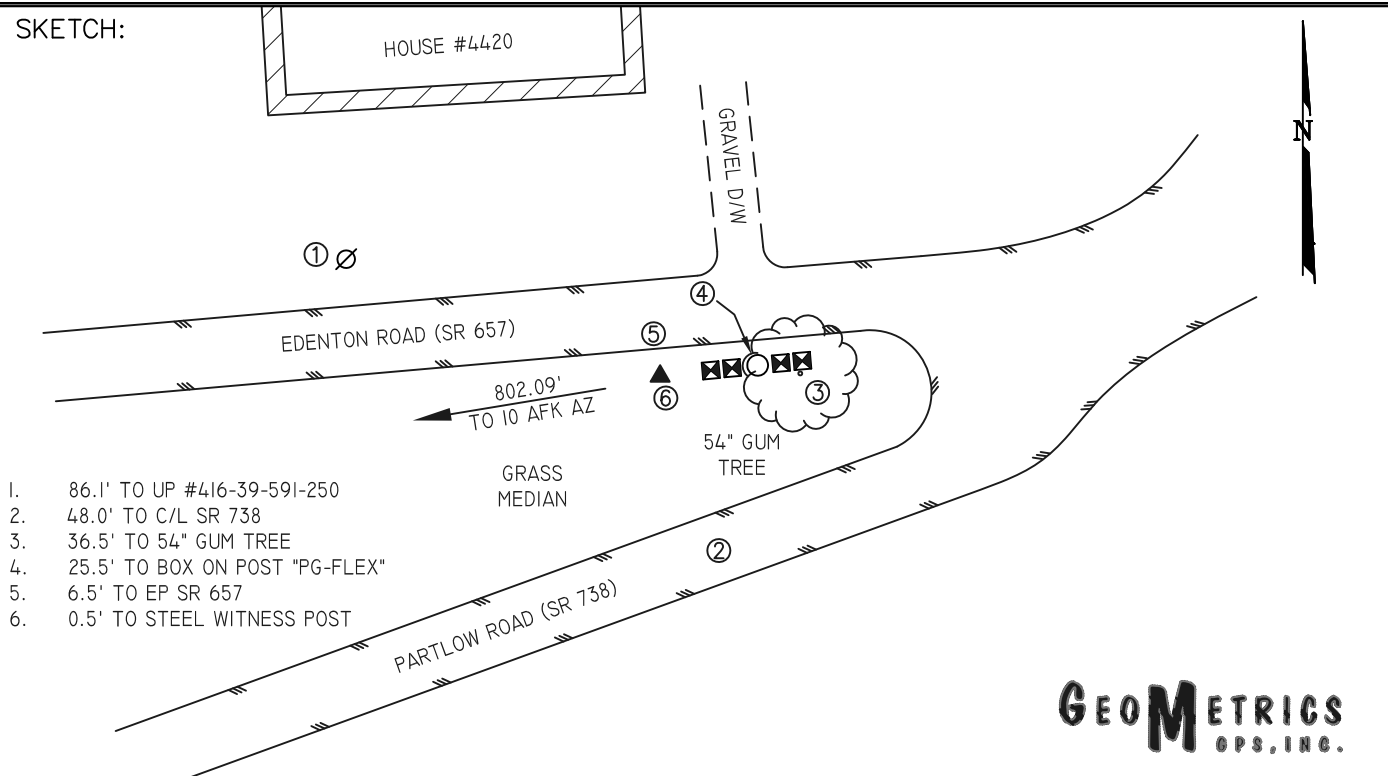
COUNTY	NAME OF STATION	YEAR
SPOTSYLVANIA	10 AFK	2005
N: 6714268.98	LAT: 38° 04' 57.79539" N	COMBINED FACTOR: 0.99999165
E: 11722890.20	LONG: 077° 39' 58.59379" W	⊖ ANGLE: 0° 31' 13"
ELEVATION: 330.21' (ESTABLISHED BY USGS)		
DISTANCES AND DIRECTIONS TO AZIMUTH MARKS		
STATION	GROUND DISTANCE	TRUE AZIMUTH
10 AFK AZ	802.09	260°49'19"

THE STATION IS LOCATED IN SPOTSYLVANIA COUNTY, VIRGINIA, APPROXIMATELY 21.9 KM (13.6 MILES) NORTHEAST OF LOUISA, AND 20.9 KM (13.0 MILES) SOUTHWEST OF THORNBURG.

TO REACH THE STATION FROM THE INTERSECTION OF US HIGHWAY 1 (JEFFERSON DAVIS HIGHWAY) AND SR 606 (MORRIS ROAD) AT THORNBURG, GO WEST ON SR 606 FOR 7.2 KM (4.5 MILES) TO ITS INTERSECTION WITH SR 738 (PARTLOW ROAD). TURN LEFT AND GO SOUTH ON SR 738 FOR 7.9 KM (4.9 MILES) TO ITS INTERSECTION WITH SR 614 (DICKERSON ROAD). CONTINUE SOUTH ON SR 738 FOR 2.7 KM (1.7 MILES) TO ITS INTERSECTION WITH SR 657 (EDENTON ROAD) AND THE STATION IN THE MEDIAN OF THE INTERSECTION.

THE STATION IS A STANDARD USGS BENCHMARK DISK SET INTO A CONCRETE MONUMENT 10 INCHES IN DIAMETER, PROJECTING 16 CM ABOVE THE GROUND SURFACE AND STAMPED 10 AFK 1964. STATION 10 AFK IS INTER-VISIBLE WITH STATION 10 AFK AZ.

SKETCH:



1. 86.1' TO UP #416-39-591-250
2. 48.0' TO C/L SR 738
3. 36.5' TO 54" GUM TREE
4. 25.5' TO BOX ON POST "PG-FLEX"
5. 6.5' TO EP SR 657
6. 0.5' TO STEEL WITNESS POST

**GEOMETRICS**  
OPS, INC.

DRAWN BY: BCL

CHECKED BY: DAR

DATE: 06/2005

APPROX. SCALE: 1" = 50'