

**SPOTSYLVANIA COUNTY VIRGINIA
2006-2007 CONTROL SURVEY (RE-ADJUSTED 2008)**

JN 106-134

HORIZONTAL DATUM: NAD 83(2007)
VERTICAL DATUM: NAVD 88
COORDINATE SYSTEM: VIRGINIA STATE PLANE, NORTH ZONE
UNITS: U.S. SURVEY FOOT

HORIZONTAL ORDER: FIRST
VERTICAL ORDER: THIRD

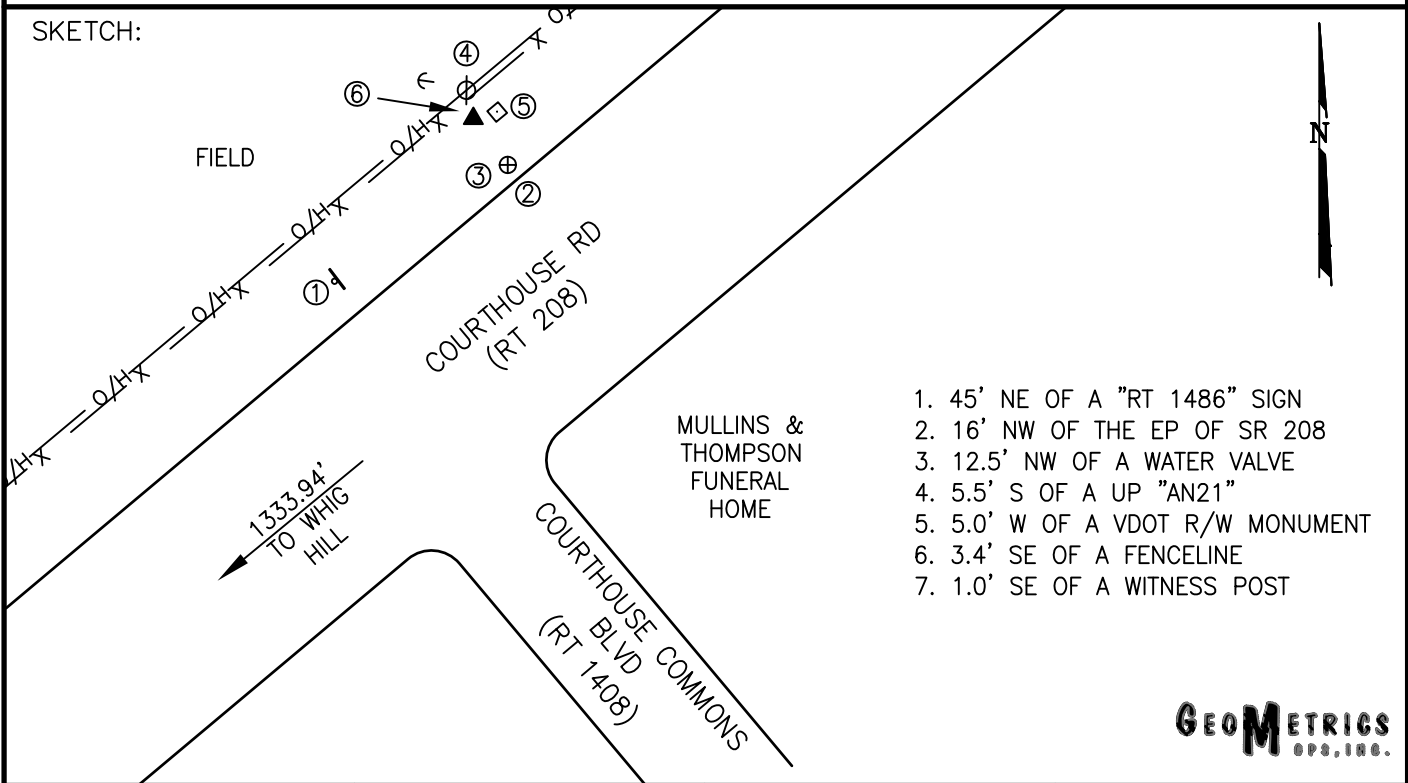
COUNTY	NAME OF STATION	YEAR
SPOTSYLVANIA	WHIG HILL AZ	2006
N: 6759452.50	LAT: 38° 12' 22.19702" N	COMBINED FACTOR: 0.99996524
E: 11746718.32	LONG: 077° 34' 54.93740" W	⊖ ANGLE: 0° 34' 23"
ELEVATION: 291.64' (ESTABLISHED BY GPS)		
DISTANCES AND DIRECTIONS TO AZIMUTH MARKS		
STATION	GROUND DISTANCE	TRUE AZIMUTH
WHIG HILL	1333.94'	228° 08' 19"

THE STATION IS LOCATED ABOUT 9.0 KM (5.6 MILES) SOUTH OF CHANCELLOR AND 0.80 KM (0.5 MILE) EAST OF SPOTSYLVANIA.

TO REACH THE STATION FROM THE INTERSECTION OF SR 208 (COURTHOUSE ROAD) AND SR 613 (BROCK ROAD), AT THE COURTHOUSE, GO NORTHEAST ON SR 208 FOR 0.8 KM (0.5 MILE) TO ITS INTERSECTION WITH ROUTE 1486 (COURTHOUSE COMMONS BLVD) AND THE STATION ON THE LEFT.

THE STATION IS A STANDARD SPOTSYLVANIA COUNTY, VA ALUMINUM SURVEY DISK SET INTO A Poured IN PLACE CONCRETE MONUMENT 10 INCHES IN DIAMETER, FLUSH WITH GROUND SURFACE AND STAMPED WHIG HILL AZ 2006.

SKETCH:



1. 45' NE OF A "RT 1486" SIGN
2. 16' NW OF THE EP OF SR 208
3. 12.5' NW OF A WATER VALVE
4. 5.5' S OF A UP "AN21"
5. 5.0' W OF A VDOT R/W MONUMENT
6. 3.4' SE OF A FENCELINE
7. 1.0' SE OF A WITNESS POST

GEO METRICS
S.P.S., INC.