

**SPOTSYLVANIA COUNTY VIRGINIA
2003-2004 CONTROL SURVEY (RE-ADJUSTED 2008)**

JN 103-060

HORIZONTAL DATUM: NAD 83(2007)
VERTICAL DATUM: NAVD 88
COORDINATE SYSTEM: VIRGINIA STATE PLANE, NORTH ZONE
UNITS: U.S. SURVEY FOOT

HORIZONTAL ORDER: FIRST
VERTICAL ORDER: THIRD

COUNTY	NAME OF STATION	YEAR
SPOTSYLVANIA	WEALTH	2004
N: 6765216.84	LAT: 38° 13' 17.04015" N	COMBINED FACTOR: 0.99997214
E: 11767521.91	LONG: 77° 30' 33.53789" W	⊖ ANGLE: 0° 37' 06"
ELEVATION: 158.39' (ESTABLISHED BY GPS)		
DISTANCES AND DIRECTIONS TO AZIMUTH MARKS		
STATION	GROUND DISTANCE	TRUE AZIMUTH
COMMON	1938.51'	167° 14' 01"

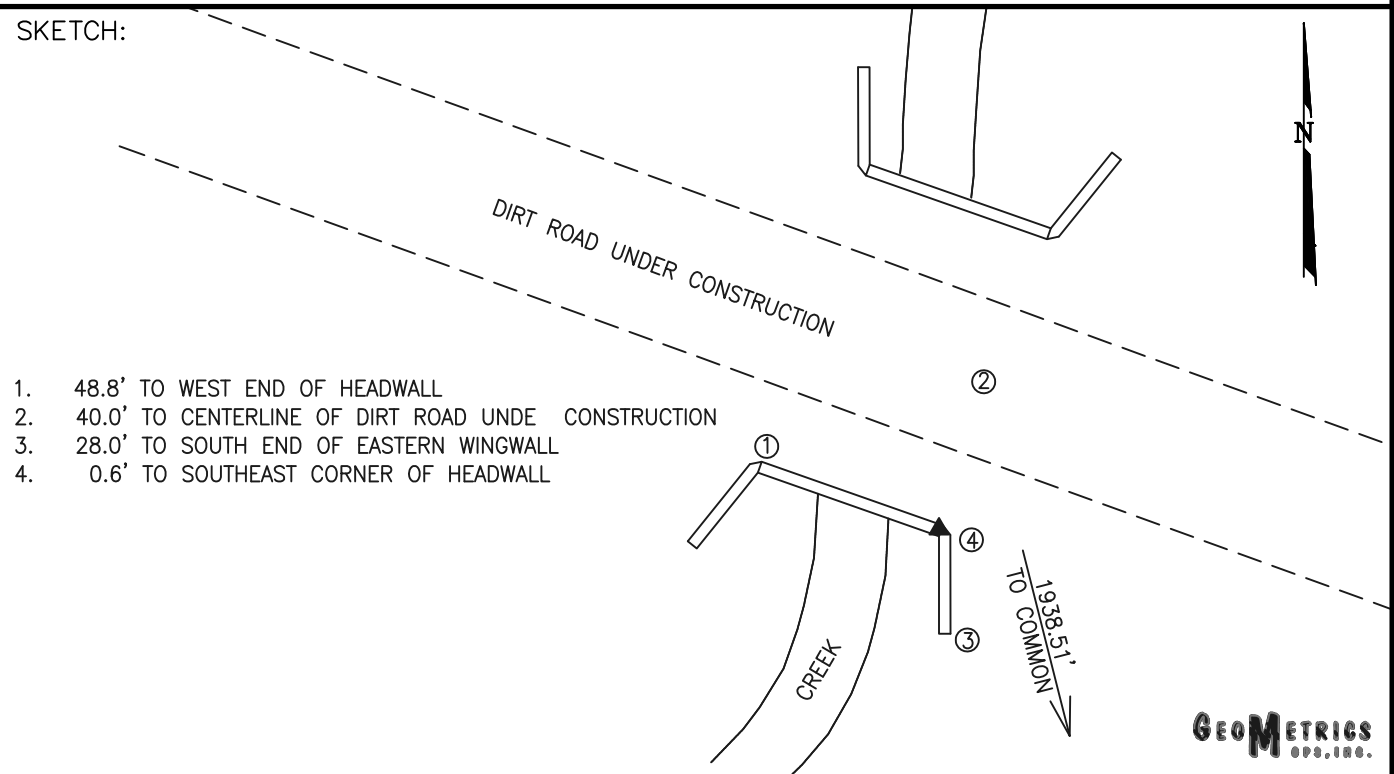
THE STATION IS LOCATED IN SPOTSYLVANIA COUNTY, VIRGINIA, APPROXIMATELY 9.2 KM (5.7 MILES) SOUTH OF THE CITY OF FREDERICKSBURG AND 7.6 KM (4.7 MILES) EAST OF THE SPOTSYLVANIA COURTHOUSE.

TO REACH THE STATION FROM THE INTERSECTION OF US HIGHWAY 1 (JEFFERSON DAVIS HIGHWAY) AND STATE HIGHWAY 17 SOUTH GO SOUTH ON US HIGHWAY 1 FOR 1.0 KM (0.6 MILE) TO A NEW DIRT ROAD UNDER CONSTRUCTION. TURN RIGHT ON THE DIRT ROAD FOR 0.3 KM (0.2 MILE) TO THE STATION ON THE LEFT. THE STATION IS IN A HEADWALL OF A BOX CULVERT.

STATION WEALTH IS INTERVISIBLE WITH STATION COMMON.

THE STATION IS A 3 1/2 INCH SPOTSYLVANIA COUNTY, VA ALUMINUM SURVEY DISK SET INTO A DRILL HOLE IN A HEADWALL OF A BOX CULVERT AND STAMPED WEALTH 2004.

SKETCH:



GEOMETRICS
OPS, INC.

DRAWN BY: BCL

CHECKED BY: LLR

DATE: 04/2004

APPROX. SCALE: 1" = 50'