

**SPOTSYLVANIA COUNTY VIRGINIA
2003-2004 CONTROL SURVEY**

JN 103-060

HORIZONTAL DATUM: NAD 83(2007) (REVISED 8-08)
 VERTICAL DATUM: NAVD 88
 COORDINATE SYSTEM: VIRGINIA STATE PLANE, NORTH ZONE
 UNITS: U.S. SURVEY FOOT

HORIZONTAL ORDER: FIRST
 VERTICAL ORDER: THIRD

COUNTY	NAME OF STATION	YEAR
SPOTSYLVANIA	VINCENT AZ	2004
N: 6754407.25	LAT: 38° 11' 29.40964" N	COMBINED FACTOR: 0.99997585
E: 11774716.52	LONG: 77° 29' 04.88575" W	⊖ ANGLE: 0° 38' 01"
ELEVATION: 255.18' (ESTABLISHED BY GPS)		
DISTANCES AND DIRECTIONS TO AZIMUTH MARKS		
STATION	GROUND DISTANCE	TRUE AZIMUTH
VINCENT	880.33'	198° 55' 34"

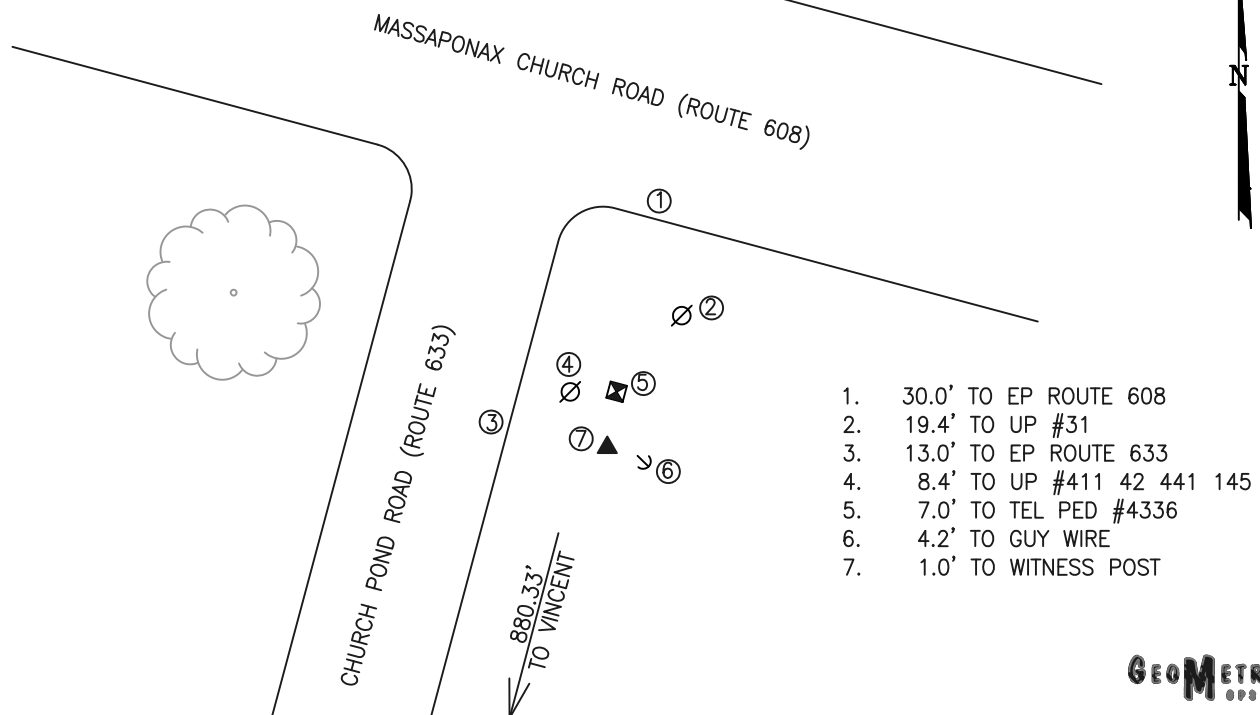
THE STATION IS LOCATED IN SPOTSYLVANIA COUNTY, VIRGINIA, APPROXIMATELY 12.2 KM (7.6 MILES) SOUTH OF THE CITY OF FREDERICKSBURG AND 9.3 KM (5.8 MILES) EAST OF THE SPOTSYLVANIA COURTHOUSE.

TO REACH THE STATION FROM THE INTERSECTION OF US HIGHWAY 1 (JEFFERSON DAVIS HIGHWAY) AND STATE ROUTE 608 (MASSAPONAX CHURCH ROAD) GO EAST ON STATE ROUTE 608 FOR 2.1 KM (1.3 MILES) TO ITS INTERSECTION WITH STATE ROUTE 633 (CHURCH POND ROAD) AND THE STATION ON THE RIGHT.

STATION VINCENT AZ IS INTERVISIBLE WITH STATION VINCENT.

THE STATION IS A 3 1/2 INCH SPOTSYLVANIA COUNTY, VA ALUMINUM SURVEY DISK SET INTO A Poured IN PLACE CONCRETE MONUMENT 10 INCHES IN DIAMETER, FLUSH WITH THE GROUND SURFACE AND STAMPED VINCENT AZ 2003.

SKETCH:



GEOMETRICS
OPS, INC.

DRAWN BY: BCL

CHECKED BY: LLR

DATE: 04/2004

APPROX. SCALE: 1" = 25'