

**SPOTSYLVANIA COUNTY VIRGINIA
2003-2004 CONTROL SURVEY**

JN 103-060

HORIZONTAL DATUM: NAD 83(2007) (REVISED 8-08)
 VERTICAL DATUM: NAVD 88
 COORDINATE SYSTEM: VIRGINIA STATE PLANE, NORTH ZONE
 UNITS: U.S. SURVEY FOOT

HORIZONTAL ORDER: FIRST
 VERTICAL ORDER: THIRD

COUNTY	NAME OF STATION	YEAR
SPOTSYLVANIA	VINCENT	2004
N: 6753571.43	LAT: 38° 11' 21.17771" N	COMBINED FACTOR: 0.99997615
E: 11774440.22	LONG: 77° 29' 08.46210" W	∅ ANGLE: 0° 37' 59"
ELEVATION: 245.50' (ESTABLISHED BY GPS)		
DISTANCES AND DIRECTIONS TO AZIMUTH MARKS		
STATION	GROUND DISTANCE	TRUE AZIMUTH
VINCENT AZ	880.33'	18° 55' 32"

THE STATION IS LOCATED IN SPOTSYLVANIA COUNTY, VIRGINIA, APPROXIMATELY 12.7 KM (7.9 MILES) SOUTH OF THE CITY OF FREDERICKSBURG AND 9.2 KM (5.7 MILES) EAST OF THE SPOTSYLVANIA COURTHOUSE.

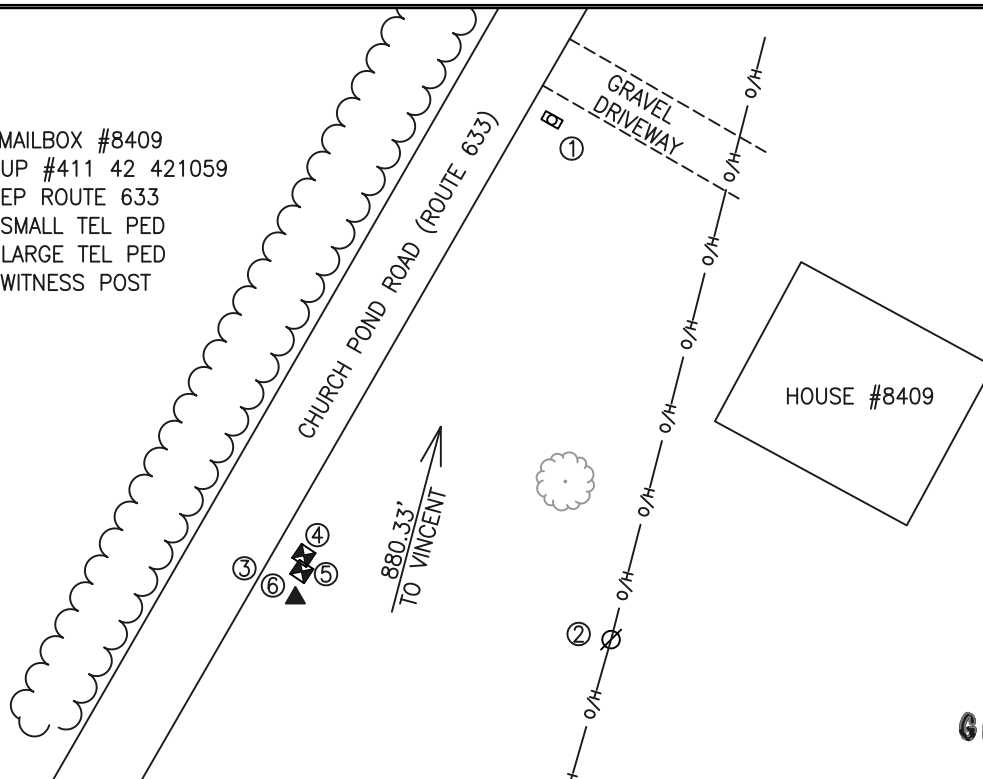
TO REACH THE STATION FROM THE INTERSECTION OF US HIGHWAY 1 (JEFFERSON DAVIS HIGHWAY) AND STATE ROUTE 608 (MASSAPONAX CHURCH ROAD) GO EAST ON STATE HIGHWAY 608 FOR 2.1 KM (1.3 MILES) TO ITS INTERSECTION WITH STATE ROUTE 633 (CHURCH POND ROAD). TURN RIGHT AND GO SOUTH ON STATE ROUTE 633 FOR 0.3 KM (0.2 MILE) TO THE STATION ON THE LEFT.

STATION VINCENT IS INTERVISIBLE WITH STATION VINCENT AZ.

THE STATION IS A 3 1/2 INCH SPOTSYLVANIA COUNTY, VA ALUMINUM SURVEY DISK SET INTO A POURED IN PLACE CONCRETE MONUMENT 10 INCHES IN DIAMETER, RECESSED ONE INCH BELOW THE GROUND SURFACE AND STAMPED VINCENT 2004.

SKETCH:

1. 223.7' TO MAILBOX #8409
2. 83.0' TO UP #411 42 421059
3. 11.0' TO EP ROUTE 633
4. 10.6' TO SMALL TEL PED
5. 6.4' TO LARGE TEL PED
6. 1.0' TO WITNESS POST



GEOMETRICS
S.P.S., INC.