

SPOTSYLVANIA COUNTY VIRGINIA 2002 CONTROL SURVEY

JN 102-040

HORIZONTAL DATUM: NAD 83(2007) (REVISED 8-08)
 VERTICAL DATUM: NAVD 88
 COORDINATE SYSTEM: VIRGINIA STATE PLANE, NORTH ZONE
 UNITS: U.S. SURVEY FOOT

HORIZONTAL ORDER: FIRST
 VERTICAL ORDER: THIRD

COUNTY	NAME OF STATION	YEAR
SPOTSYLVANIA	VA 17 AZ	2002
N: 6768014.80	LAT: 38° 13' 46.08697" N	COMBINED FACTOR: 0.99996082
E: 11754192.49	LONG: 77° 33' 20.19959" W	⊖ ANGLE: 0° 35' 21.9"
ELEVATION: 323.41 (ESTABLISHED BY GPS)		
DISTANCES AND DIRECTIONS TO AZIMUTH MARKS		
STATION	GROUND DISTANCE	TRUE AZIMUTH
VA 17	1025.81'	334°42'17"

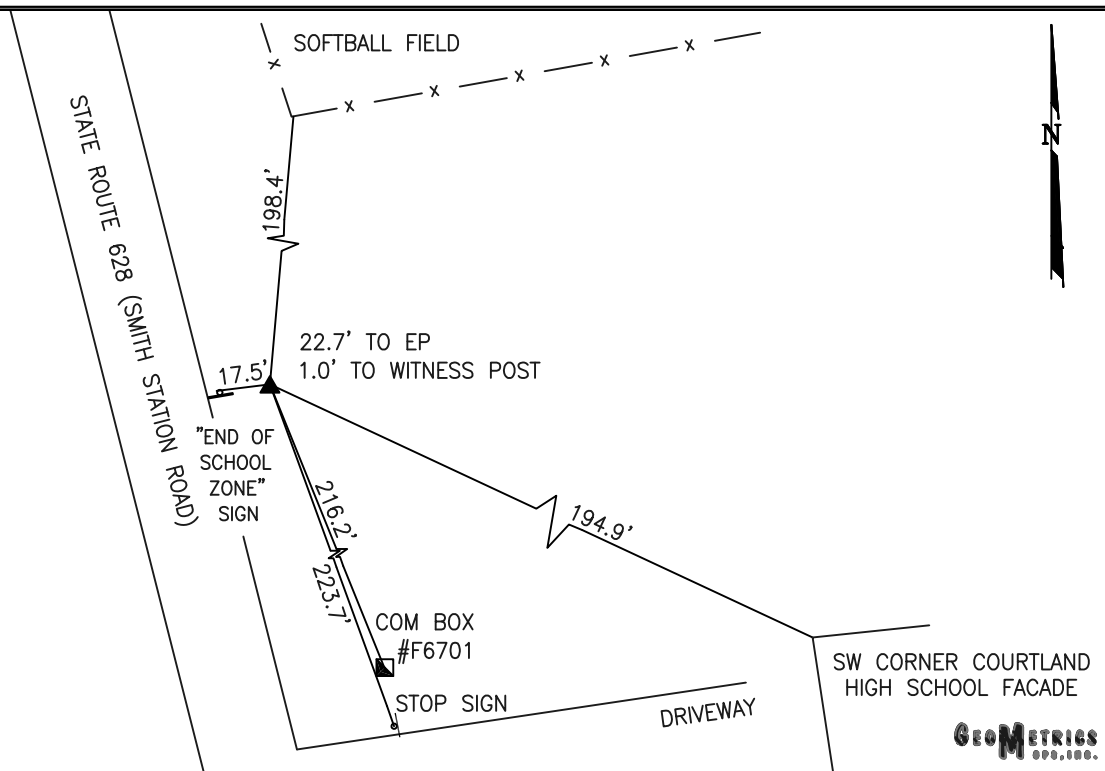
THE STATION IS LOCATED IN SPOTSYLVANIA COUNTY, VIRGINIA APPROXIMATELY 6.5 MILES SOUTHWEST THE CITY OF FREDERICKSBURG.

TO REACH THE STATION FROM THE INTERSECTION OF US HIGHWAY 1 (JEFFERSON DAVIS HIGHWAY) AND STATE ROUTE 208 (COURTHOUSE ROAD PROCEED SOUTHWEST ALONG STATE ROUTE 208 COURTHOUSE ROAD) A DISTANCE OF APPROXIMATELY 3.8 MILES TO ITS INTERSECTION WITH STATE ROUTE 628 (SMITH STATION ROAD). TURN LEFT AND PROCEED SOUTHEAST ALONG STATE ROUTE 628 (SMITH STATION ROAD) A DISTANCE OF APPROXIMATELY 0.4 MILE TO THE STATION ON THE LEFT.

THE STATION IS A 3 1/2 INCH SPOTSYLVANIA COUNTY, VA ALUMINUM SURVEY DISK SET IN A Poured IN PLACE CONCRETE MONUMENT FLUSH WITH THE GROUND SURFACE AND STAMPED VA 17 AZ 2002.

THE STATION IS INTERVISIBLE WITH STATION VA 17.

SKETCH:



DRAWN BY: KNT

CHECKED BY: CEN

DATE: 07/2002

APPROX. SCALE: 1" = 60'

