

# SPOTSYLVANIA COUNTY VIRGINIA 2002 CONTROL SURVEY

JN 102-040

HORIZONTAL DATUM: NAD 83(2007) (REVISED 8-08)  
 VERTICAL DATUM: NAVD 88  
 COORDINATE SYSTEM: VIRGINIA STATE PLANE, NORTH ZONE  
 UNITS: U.S. SURVEY FOOT

HORIZONTAL ORDER: HARN  
 VERTICAL ORDER: B

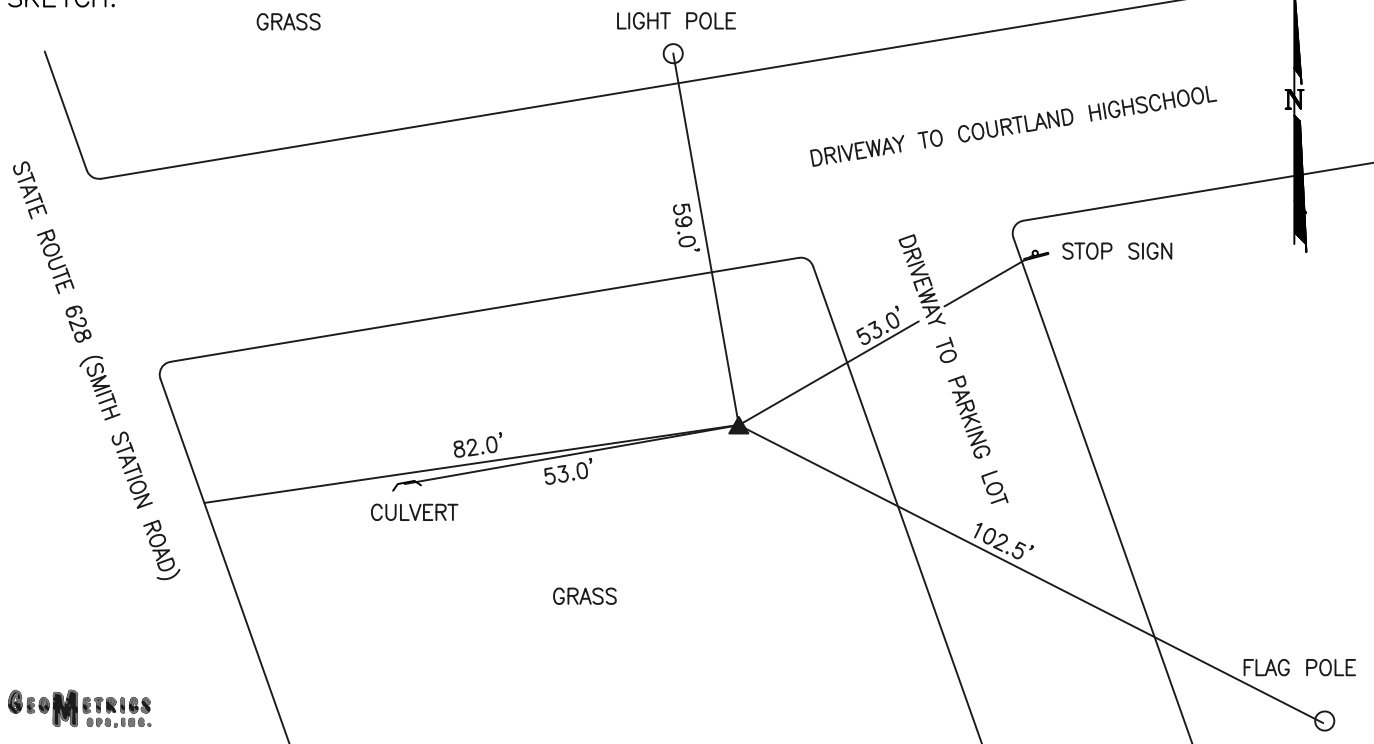
COUNTY	NAME OF STATION	YEAR
SPOTSYLVANIA	VA 17	2002
N: 6768937.66	LAT: 38° 13' 55.25502" N	COMBINED FACTOR: 0.99996079
E: 11753744.68	LONG: 77° 33' 25.69266" W	⊖ ANGLE: 0° 35' 18.4"
ELEVATION: 317.77 (ESTABLISHED BY GPS)		
DISTANCES AND DIRECTIONS TO AZIMUTH MARKS		
STATION	GROUND DISTANCE	TRUE AZIMUTH
VA 17 AZ	1025.81'	154°42'14"

THE STATION IS LOCATED ABOUT 3.7 MILES NORTHWEST OF NEW POST, 2.5 MILES SOUTH-SOUTHEAST OF FALMOUTH AND IN FREDERICKSBURG ON THE GROUNDS OF THE SPOTSYLVANIA COUNTY SCHOOL OFFICE BUILDING.

TO REACH THE STATION FROM THE INTERSECTION OF INTERSTATE HIGHWAY 95 AND U.S. HIGHWAY 1 AT THE SOUTH EDGE OF FREDERICKSBURG, GO NORTH ON U.S. HIGHWAY 1 FOR 1.1 MILES TO THE INTERSECTION OF STATE HIGHWAY 208, TURN LEFT ON STATE HIGHWAY 208 FOR 3.7 MILES TO THE INTERSECTION OF SECONDARY STATE HIGHWAY 628 (SMITH STATION ROAD), TURN LEFT SOUTHEAST ALONG HIGHWAY 628 FOR 0.1 MILE TO THE ENTRANCE OF THE SPOTSYLVANIA COUNTY SCHOOL OFFICE BUILDING ON THE LEFT, TURN LEFT ONTO ENTRANCE DRIVEWAY AND THE STATION ON THE RIGHT.

THE STATION IS A STAINLESS STEEL ROD ENCASED IN A SLEEVE WITH AN NGS LOGO CAP STAMPED VA 17 1993. THE STATION IS INTERVISIBLE WITH STATION VA 17 AZ.

SKETCH:



GeoMetrics  
S.P.A., INC.

DRAWN BY: KNT

CHECKED BY: CEN

DATE: 08/2002

APPROX. SCALE: 1" = 30'