

**SPOTSYLVANIA COUNTY VIRGINIA  
2002/2003 CONTROL SURVEY**

JN 102-080

HORIZONTAL DATUM: NAD 83(2007) (REVISED 8-08)  
 VERTICAL DATUM: NAVD 88  
 COORDINATE SYSTEM: VIRGINIA STATE PLANE, NORTH ZONE  
 UNITS: U.S. SURVEY FOOT

HORIZONTAL ORDER: FIRST  
 VERTICAL ORDER: THIRD

COUNTY	NAME OF STATION	YEAR
SPOTSYLVANIA	TT 6 K NPS	1933
N: 6790998.12	LAT: 38° 17' 37.66901"N	COMBINED FACTOR: 0.99994835
E: 11706949.75	LONG: 077° 43' 09.79476"W	⊖ ANGLE: 0° 29' 14"
ELEVATION: 439.00' (ESTABLISHED BY LEVELS)		

DISTANCES AND DIRECTIONS TO AZIMUTH MARKS		
STATION	GROUND DISTANCE	TRUE AZIMUTH
N/A		

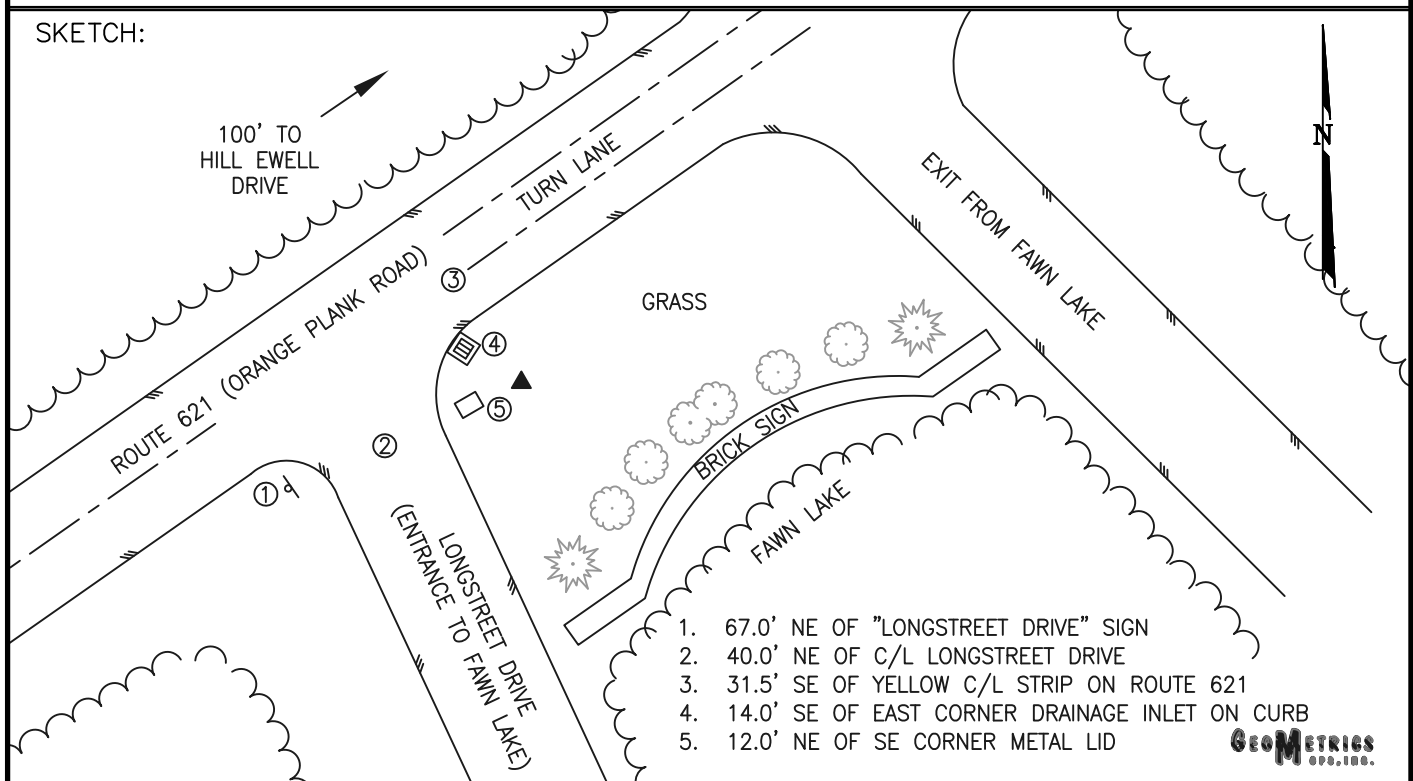
MARK HAS BEEN DISTURBED DUE TO LANDSCAPING. A COMPLETE NEW DESCRIPTION IS AS FOLLOWS:

THE STATION IS LOCATED IN NORTHWEST SPOTSYLVANIA COUNTY, VIRGINIA AT FAWN LAKE APPROXIMATELY 12.5 MILES (20.1 KM) WEST FROM THE CITY OF FREDERICKSBURG.

TO REACH THE STATION FROM THE INTERSECTION OF STATE ROUTE 3 (PLANK ROAD) AND STATE ROUTE 621 (ORANGE PLANK ROAD) PROCEED SOUTHWESTERLY ALONG STATE ROUTE 621 (ORANGE PLANK ROAD) A DISTANCE OF 2.1 MILES (3.4 KM) TO ITS INTERSECTION WITH STATE ROUTE 613 (BROCK ROAD). CONTINUE SOUTHWESTERLY ALONG STATE ROUTE 621 (ORANGE PLANK ROAD) A DISTANCE OF 0.8 MILE (1.3 KM) TO THE STATION ON THE LEFT AT THE ENTRANCE TO FAWN LAKE.

THE STATION IS A STANDARD NATIONAL PARK SERVICE DISK SET IN A CONCRETE MONUMENT AND STAMPED TT 6 K 1933.

SKETCH:



1. 67.0' NE OF "LONGSTREET DRIVE" SIGN
2. 40.0' NE OF C/L LONGSTREET DRIVE
3. 31.5' SE OF YELLOW C/L STRIP ON ROUTE 621
4. 14.0' SE OF EAST CORNER DRAINAGE INLET ON CURB
5. 12.0' NE OF SE CORNER METAL LID

**GEOMETRICS**  
CONSULTANTS, INC.

DRAWN BY: BCL	CHECKED BY: DAR	DATE: 02/2003	APPROX. SCALE: 1" = 50'
---------------	-----------------	---------------	-------------------------