

SPOTSYLVANIA COUNTY, VIRGINIA  
E911 GPS SURVEY REVISED 10/2008

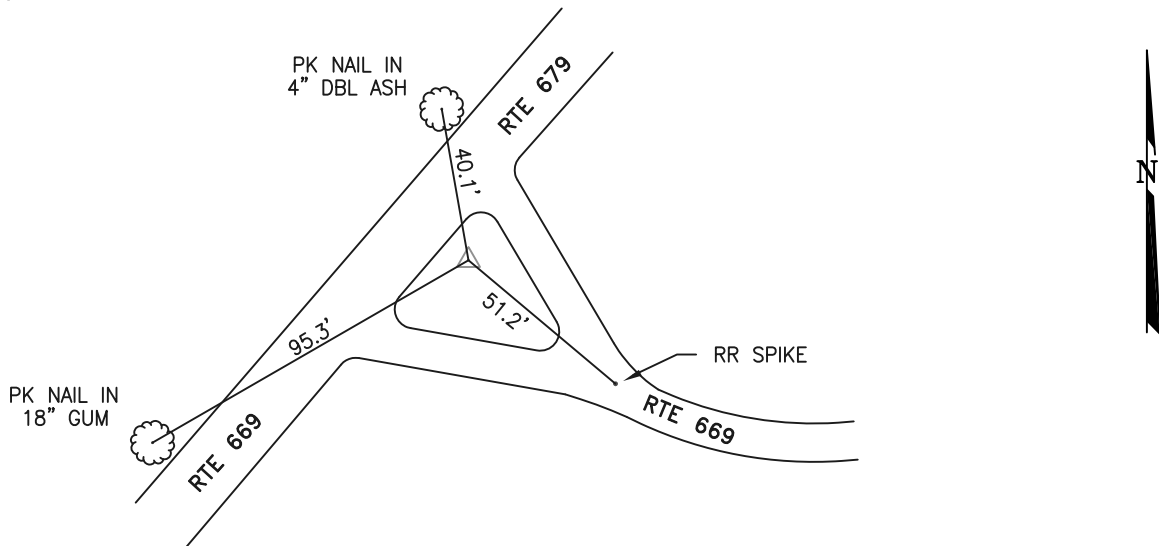
W.O. 95007

MAP PROJECTION: LAMBERT ORDER OF SURVEY: FIRST  
NAD 83(2007) \* VIRGINIA STATE PLANE COORDINATE SYSTEM \* NORTH ZONE

COUNTY		NAME OF STATION		YEAR
CAROLINE		TRIVETT		1995
N: 6681444.38	E: 11733223.61	LAT.: 37° 59' 32.36865"N	LONG.: 77° 37' 53.24291"W	
GRID FACTOR: 1.00000749	SEA LEVEL FACTOR: 0.99999192	⊕ ANGLE: +0° 32' 31.47"		
ESTABLISHED BY: GeoMetrics GPS, INC.	YEAR 1995	DISTANCES AND DIRECTIONS TO REFERENCE MARKS AND PROMINENT OBJECTS OBSERVED AT STATION		
		OBJECT	DISTANCE-FT.	MAG. AZIMUTH
VERTICAL DATUM NAVD 88				
ELEVATION (FT.) 274.13				
RECOVERED: NOV 2000				

DESCRIPTION OF STATION:  
The station is a Spotsylvania County survey disk set in concrete stamped TRIVETT 1995, located in Caroline County, Virginia, approximately 3.5 miles south of Partlow. To reach the station from the intersection of Route 208 (Courthouse Road) Route 606 (Morris Road) and Route 738 (Partlow Road) at Snell, proceed south along Route 738 11.8 miles to its intersection with Route 669 (Butler Road). Turn right and proceed south along Route 669 (Butler Road)/Route 662 (Log Cabin Road) 3.5 miles to its intersection with Route 679 (Country Road) and the station is in the grass median of the intersection. Witness post set N60°W at 0.9 feet.

SKETCH OF STATION:



THIS SURVEY DATA PREPARED  
USING 1 meter = 3.280833 feet

**GEOMETRICS**  
GPS, INC.

236 CAMBRIDGE ROAD  
FREDERICKSBURG, VIRGINIA  
(540) 372-3499

PREPARED BY: EJP	DATE: AUG '95
CHECKED BY: DAR	DATE: AUG '95

NOTE:  
IN 2008 THE COORDINATES WERE CONVERTED TO  
NAD83(2007) BY APPLYING A COMPUTED SHIFT