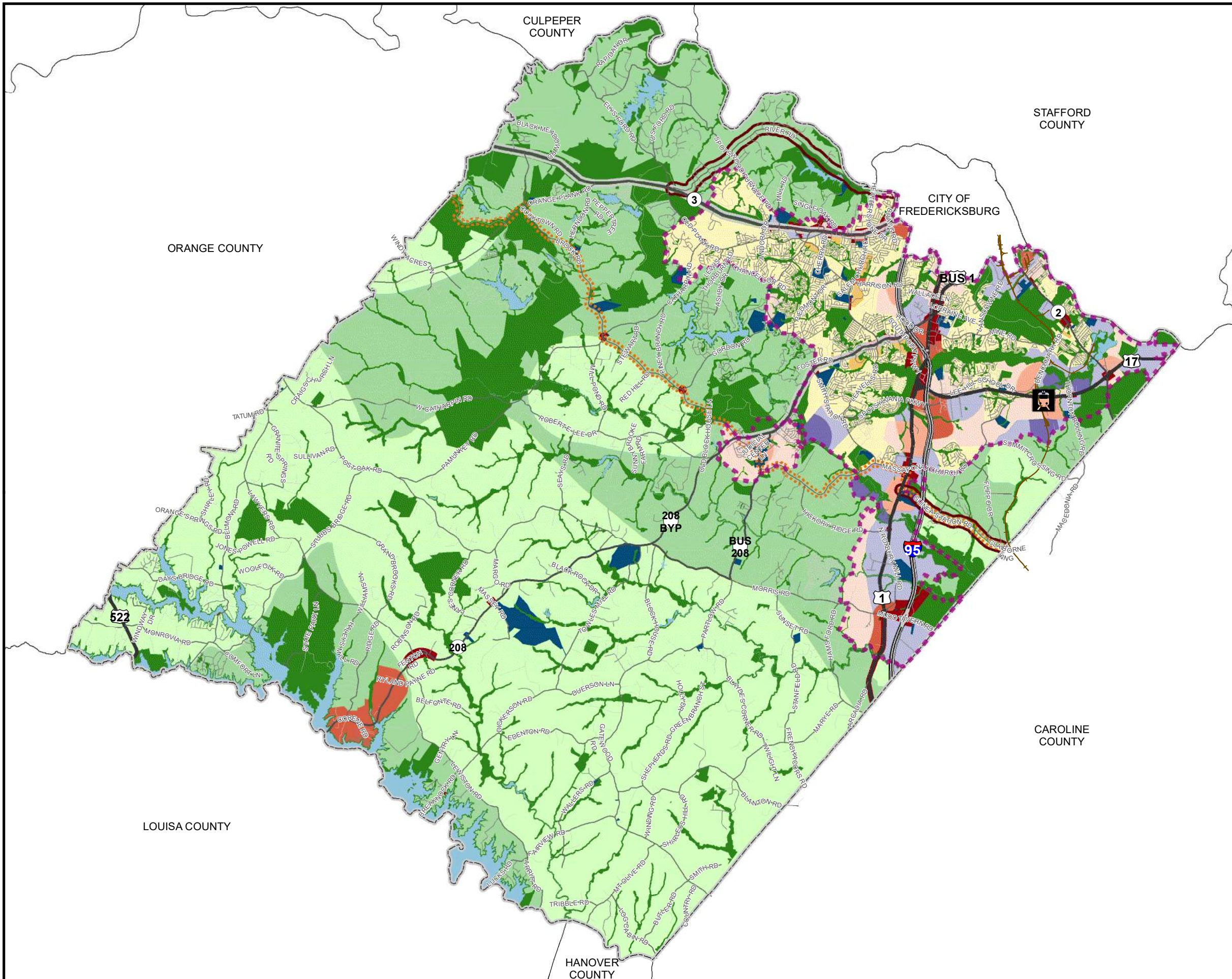


# SPOTSYLVANIA COUNTY FUTURE LAND USE MAP

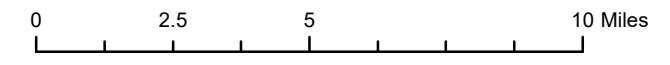


**Legend**

- VRE Station (Rail)
- Rail Corridor
- Primary Development Boundary

**Land Use Description**

- Scenic Byway
- Scenic Road
- Civil War Trail
- Agricultural and Forestral
- Commercial
- Employment Center Heavy
- Employment Center Light
- High Density Residential
- Institutional
- Low Density Residential
- Mixed Use Commercial Heavy
- Mixed Use General
- Mixed Use Light
- Open Space
- Rural
- Water



Map Approved: December 14, 2021