

Technology Zone Program

The Technology Zone Program serves both new and existing qualified businesses, affording tax rebates on Business, Professional and Occupational License (BPOL) and Machinery & Tools Tax (M/T). The qualified business is also placed in the County's Targeted Industry Program, initiating the Fast Track Development Review Process.

Qualifications

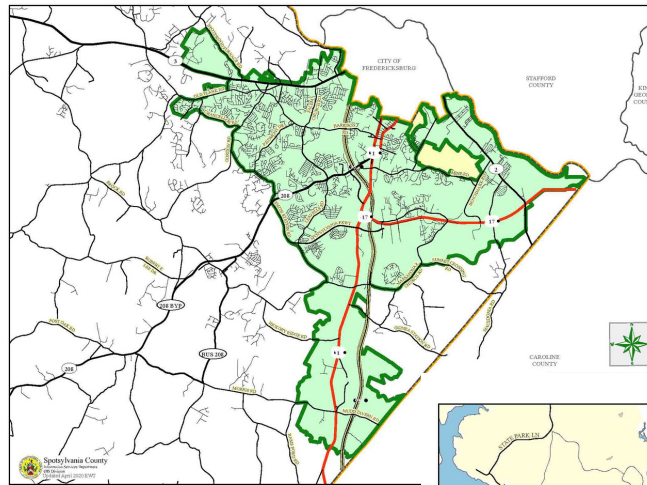
Business's primary purpose is the research, development, or manufacture and/or design for lease, sale or license of Technology Products, Processes or Related Services.

Existing Technology Businesses must make a capital investment of at least \$100,000 over the base year or increase the average number of full-time employees by the greater of 10% over the base year or an average increase over the base year of at least 3 new, full time employees

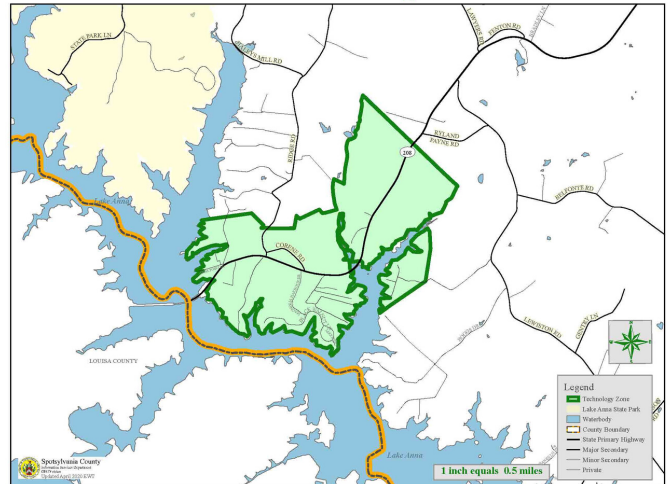
New Tourism Businesses must make a capital investment of at least \$150,000 or employee at least 5 full-time employees

ALL Tourism Businesses must provide wages to full-time employees that are equal to or greater than 20% above the County's average annual salary as determined by the DED and meet and maintain the minimum qualifying employment and investment levels through year 5 in order to qualify

Upper Spotsylvania Technology Zone



Lake Anna Technology Zone



Available Incentives

Tax Rebates

- Rebate on business, professional and occupational license tax imposed by the County
- Rebate on machinery and tools tax imposed by the County
- For those Qualified Technology Businesses that are Existing Technology Businesses, rebates shall only be applicable to taxes assessed on the portion of gross receipts or acquired machinery and tools directly attributable to the expansion of the business.

Targeted Industry Status

- Qualified Technology Businesses shall be placed in the County's established Fast Track Development Review, Permitting and Inspections program.

For more information about Spotsylvania County Technology Zones, visit spotsylvania.org or call us at 540-507-7210