

**SPOTSYLVANIA COUNTY VIRGINIA  
2007 GEODETIC CONTROL SURVEY**

JN 107-065

HORIZONTAL DATUM: NAD 83(2007)  
VERTICAL DATUM: NAVD 88  
COORDINATE SYSTEM: VIRGINIA STATE PLANE, NORTH ZONE  
UNITS: U.S. SURVEY FOOT

HORIZONTAL ORDER: FIRST  
VERTICAL ORDER: THIRD

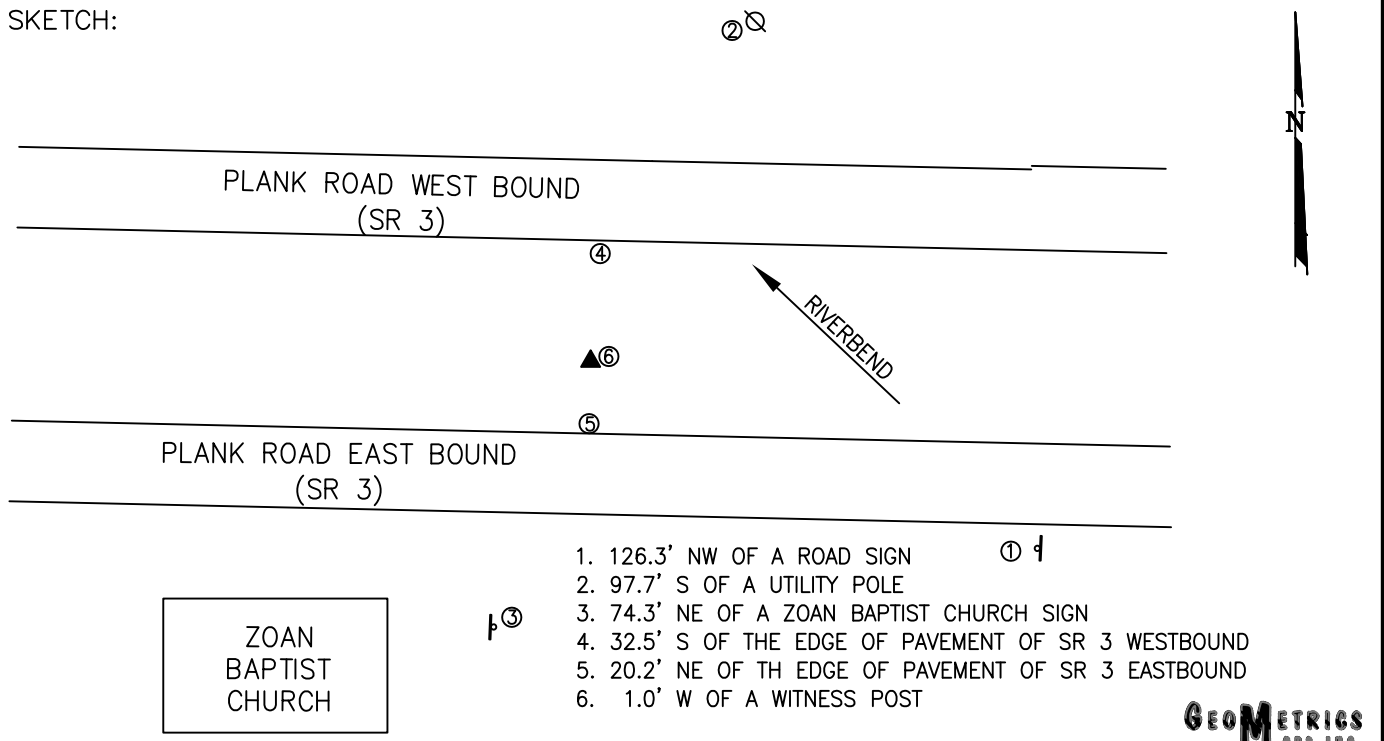
COUNTY	NAME OF STATION	YEAR
SPOTSYLVANIA	ZOAN 2	2007
N: 6790727.67	LAT: 38° 17' 31.13164" N	COMBINED FACTOR: 0.99995242
E: 11748976.08	LONG: 77° 34' 22.69619" W	⊖ ANGLE: 0° 34' 43"
ELEVATION: 358.02' (ESTABLISHED BY GPS)		
DISTANCES AND DIRECTIONS TO AZIMUTH MARKS		
STATION	GROUND DISTANCE	TRUE AZIMUTH
RIVERBEND	1199.26	310° 09' 26"

THE STATION IS LOCATED ABOUT 10.2 KM (6.3 MILES) NORTH OF SPOTSYLVANIA, AND 1.9 KM (1.2 MILES) EAST OF CHANCELLOR.

TO REACH THE STATION FROM THE INTERSECTION OF SR 3 (PLANK ROAD) AND INTERSTATE 95, GO WEST ON SR 3 FOR 5.6 KM (3.5 MILES) TO ITS INTERSECTION WITH SR 620 (HARRISON ROAD). CONTINUE WEST ON SR 3 FOR 0.4 KM (0.28 MILE) TO THE STATION IN THE MEDIAN JUST NORTH OF THE ZOAN BAPTIST CHURCH.

THE STATION IS A STANDARD SPOTSYLVANIA COUNTY, VA ALUMINUM SURVEY DISK SET INTO A POURED IN PLACE CONCRETE MONUMENT 10 INCHES IN DIAMETER, FLUSH WITH GROUND SURFACE AND STAMPED ZOAN 2 2007.

SKETCH:



1. 126.3' NW OF A ROAD SIGN ①
2. 97.7' S OF A UTILITY POLE
3. 74.3' NE OF A ZOAN BAPTIST CHURCH SIGN
4. 32.5' S OF THE EDGE OF PAVEMENT OF SR 3 WESTBOUND
5. 20.2' NE OF TH EDGE OF PAVEMENT OF SR 3 EASTBOUND
6. 1.0' W OF A WITNESS POST

ZOAN  
BAPTIST  
CHURCH

