

SPOTSYLVANIA COUNTY, VA  
 GEODETIC SURVEY CONTROL (REVISED 8-08)

JN 100058

MAP PROJECTION: LAMBERT

HORIZONTAL ORDER: FIRST

NAD 83(2007) \* VIRGINIA STATE PLANE COORDINATE SYSTEM \* NORTH ZONE \* U.S. SURVEY FOOT

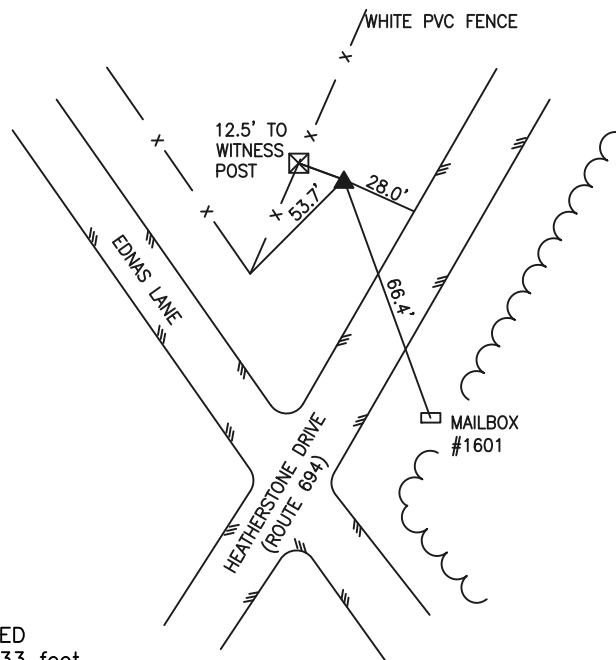
COUNTY	NAME OF STATION	YEAR
SPOTSYLVANIA	WILBURN	2001

N: 6793733.36	E: 11761575.94	LAT: 38°17'59.55553"	LONG: 077°31'44.26319"
GRID FACTOR: 0.99996366	COMBINED FACTOR: 0.99995127	ϕ ANGLE: 0°36'21.8"	

ESTABLISHED BY: GeoMetrics GPS, INC.	DISTANCES AND DIRECTIONS TO REFERENCE MARKS AND PROMINENT OBJECTS OBSERVED AT STATION		
	OBJECT	GROUND DISTANCE	TRUE AZIMUTH
VERTICAL DATUM NAVD 88	(SEE SKETCH BELOW)		
ELEVATION (FT.) 258.95			
VERTICAL ORDER: THIRD			

TO REACH:  
 THE STATION IS LOCATED IN NORTHERN SPOTSYLVANIA COUNTY, VIRGINIA. TO REACH THE STATION FROM THE INTERSECTION OF I-95 AND PLANK ROAD (ROUTE 3) PROCEED NORTHWEST ALONG PLANK ROAD (ROUTE 3) A DISTANCE OF 1.3 MILES TO ITS INTERSECTION WITH HEATHERSTONE DRIVE (ROUTE 694). TURN RIGHT AND PROCEED NORTHWEST ALONG HEATHERSTONE DRIVE (ROUTE 694) A DISTANCE OF 0.7 MILE TO ITS INTERSECTION WITH EDNAS LANE AND THE STATION ON THE LEFT.

SKETCH OF STATION:  
 APPROX. SCALE: 1" = 50'



THIS SURVEY DATA PREPARED  
 USING 1 meter = 3.28083333 feet

PREPARED BY: BCL	5/01
CHECKED BY: LLR	8/01

**GEOMETRICS**  
 GPS, INC.  
 236 CAMBRIDGE STREET  
 FREDERICKSBURG, VIRGINIA  
 (540) 372-3499