

SPOTSYLVANIA COUNTY, VIRGINIA  
E911 GPS SURVEY REVISED 10/2008

W.O. 95007

MAP PROJECTION: LAMBERT

ORDER OF SURVEY: FIRST

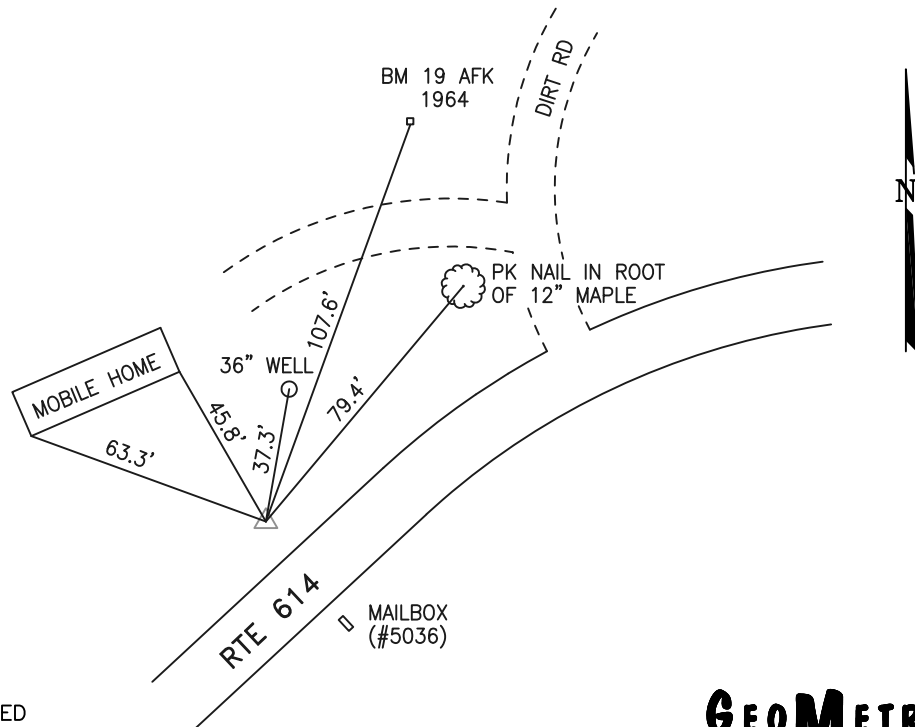
NAD 83(2007) \* VIRGINIA STATE PLANE COORDINATE SYSTEM \* NORTH ZONE

COUNTY		NAME OF STATION		YEAR
SPOTSYLVANIA		WARE		1995
N: 6719366.61	E: 11709089.37	LAT.: 38°05'49.39041"N	LONG.: 77°42'50.64948"W	
GRID FACTOR: 0.99998937	SEA LEVEL FACTOR: 0.99998855		ϕ ANGLE: +0°29'25.85"	
ESTABLISHED BY: GeoMetrics GPS, INC.	YEAR 1995	DISTANCES AND DIRECTIONS TO REFERENCE MARKS AND PROMINENT OBJECTS OBSERVED AT STATION		
		OBJECT	DISTANCE-FT.	MAG. AZIMUTH
VERTICAL DATUM NAVD 88				
ELEVATION (FT.) 344.99				
RECOVERED: OCT 2000				

DESCRIPTION OF STATION:

The station is Spotsylvania County survey disk set in concrete stamped WARE 1995 located in Spotsylvania County, Virginia, approximately 10.0 miles southwest of Spotsylvania Court House. To reach the station from the intersection of Route 208 (Courthouse Road) and Route 606 (Post Oak Road) at Post Oak proceed southwest along Route 208 (Courthouse Road) 7.5 miles to its intersection with Route 601 (Lewiston Road). Turn left and proceed southeast along Route 601 (Lewiston Road) 3.9 miles to its intersection with Route 614 (Dickerson Road). Turn left and proceed northeast along Route 614 (Dickerson Road) 1.6 miles to its intersection with Route 657 (Edenton Road). Turn left and proceed north along Route 614 1.1 miles to the station on the left. Witness post set S35°E at 0.5 foot.

SKETCH OF STATION:



THIS SURVEY DATA PREPARED  
USING 1 meter = 3.280833 feet

**GEOMETRICS**  
GPS, INC.

236 CAMBRIDGE ROAD  
FREDERICKSBURG, VIRGINIA  
(540) 372-3499

PREPARED BY: EJP	DATE: AUG '95
CHECKED BY: DAR	DATE: AUG '95

NOTE:  
IN 2008 THE COORDINATES WERE CONVERTED TO  
NAD83(2007) BY APPLYING A COMPUTED SHIFT