

**SPOTSYLVANIA COUNTY VIRGINIA  
2003-2004 CONTROL SURVEY**

JN 103-060

HORIZONTAL DATUM: NAD 83(2007) (REVISED 8-08)  
 VERTICAL DATUM: NAVD 88  
 COORDINATE SYSTEM: VIRGINIA STATE PLANE, NORTH ZONE  
 UNITS: U.S. SURVEY FOOT

HORIZONTAL ORDER: FIRST  
 VERTICAL ORDER: THIRD

COUNTY	NAME OF STATION	YEAR
SPOTSYLVANIA	U 390 AZ	2003
N: 6756552.47	LAT: 38° 11' 51.34427" N	COMBINED FACTOR: 0.99997507
E: 11767971.78	LONG: 77° 30' 29.07403" W	⊖ ANGLE: 0° 37' 09"
ELEVATION: 249.31' (ESTABLISHED BY LEVELING)		
DISTANCES AND DIRECTIONS TO AZIMUTH MARKS		
STATION	GROUND DISTANCE	TRUE AZIMUTH
U 390	1402.37'	11° 26' 11"

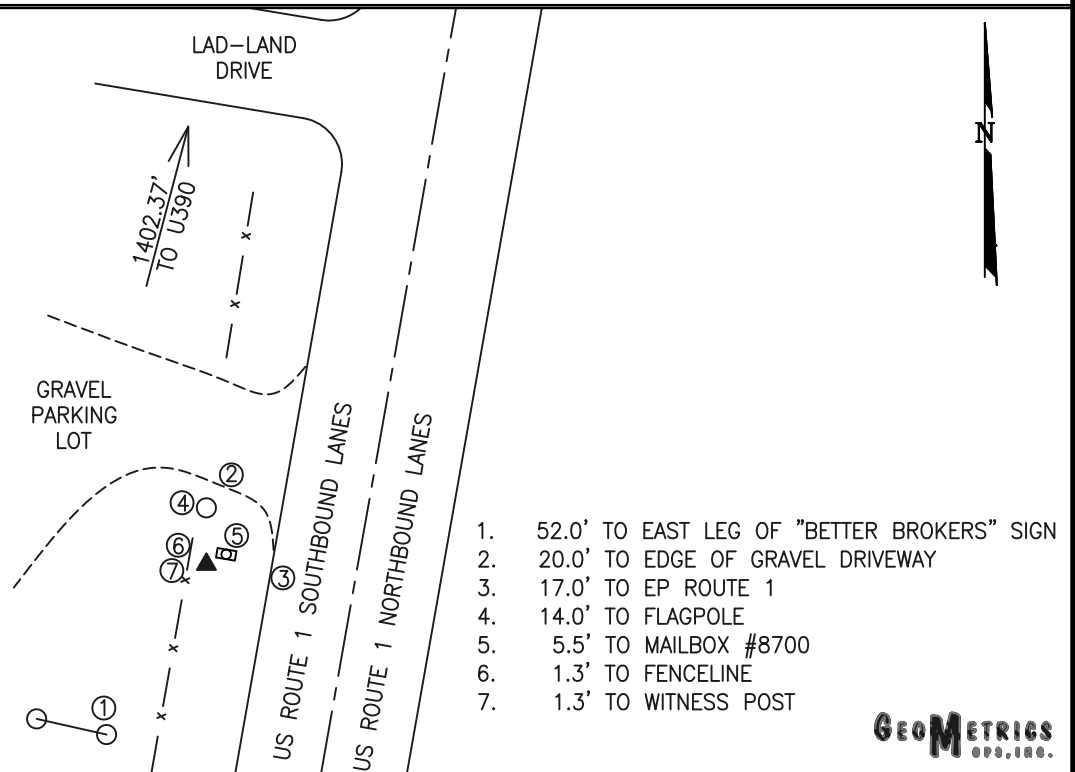
THE STATION IS LOCATED IN SPOTSYLVANIA COUNTY, VIRGINIA, APPROXIMATELY 12.1 KM (7.5 MILES) SOUTHWEST OF THE CITY OF FREDERICKSBURG AND 7.1 KM (4.4 MILES) EAST OF THE SPOTSYLVANIA COURTHOUSE.

TO REACH THE STATION FROM THE INTERSECTION OF US HIGHWAY 1 (JEFFERSON DAVIS HIGHWAY) AND STATE ROUTE 608 (MASSAPONAX CHURCH ROAD) GO NORTH ON US HIGHWAY 1 FOR 0.5 KM (0.3 MILE) TO THE STATION ON THE LEFT.

STATION U 390 AZ IS INTERVISIBLE WITH STATION U 390.

THE STATION IS A 3 1/2 INCH SPOTSYLVANIA COUNTY, VA ALUMINUM SURVEY DISK SET INTO A Poured IN PLACE CONCRETE MONUMENT 10 INCHES IN DIAMETER, RECESSED ONE INCH BELOW THE GROUND SURFACE AND STAMPED U 390 AZ 2003.

SKETCH:



**GEOMETRICS**  
OPS., INC.