

**SPOTSYLVANIA COUNTY VIRGINIA
2003 CONTROL SURVEY**

JN 103-009

HORIZONTAL DATUM: NAD 83(2007) (REVISED 8-08)
 VERTICAL DATUM: NAVD 88
 COORDINATE SYSTEM: VIRGINIA STATE PLANE, NORTH ZONE
 UNITS: U.S. SURVEY FOOT

HORIZONTAL ORDER: FIRST
 VERTICAL ORDER: THIRD

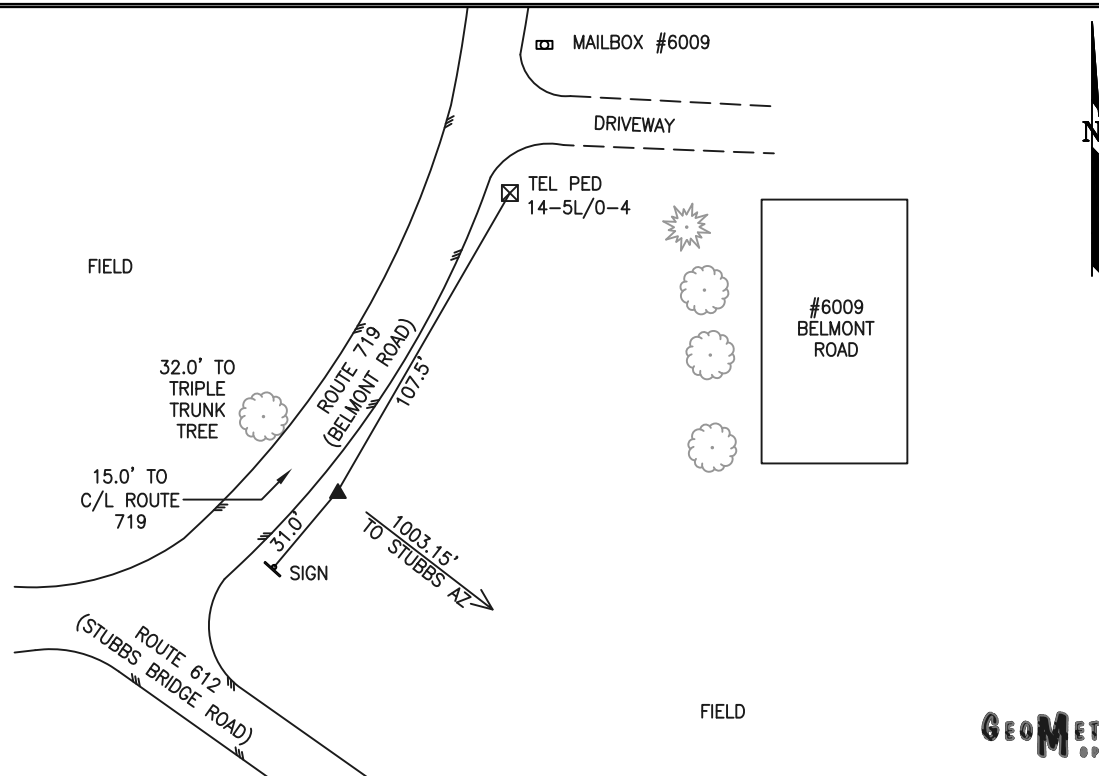
COUNTY	NAME OF STATION	YEAR
SPOTSYLVANIA	STUBBS	2003
N: 6728316.17	LAT: 38° 07' 21.29741" N	COMBINED FACTOR: 0.99997373
E: 11663985.11	LONG: 77° 52' 14.10239" W	∅ ANGLE: 0° 23' 34"
ELEVATION: 351.53' (ESTABLISHED BY GPS)		
DISTANCES AND DIRECTIONS TO AZIMUTH MARKS		
STATION	GROUND DISTANCE	TRUE AZIMUTH
STUBBS AZ	1003.15'	141° 28' 49"

THE STATION IS LOCATED IN SOUTHWESTERN SPOTSYLVANIA COUNTY, VIRGINIA. THE STATION IS ABOUT 16 MILES SOUTHWEST OF THE SPOTSYLVANIA COUNTY COURTHOUSE AND IN FRONT OF A DOUBLE-WIDE TRAILER WITH THE ADDRESS OF 6009 DAYS BRIDGE ROAD ROAD.

TO REACH THE STATION FROM THE INTERSECTION OF US HIGHWAY 522 (ZACHARY TAYLOR ROAD) AND STATE ROUTE 208 (NEW BRIDGE ROAD) IN LOUISA COUNTY, GO NORTHWESTERLY ON US HIGHWAY 522 FOR 1.6 KM (1.0 MILE) TO AN INTERSECTION. TURN RIGHT AND GO NORTHEASTERLY ON STATE ROUTE 719 (DAYS BRIDGE ROAD) FOR 3.7 KM (2.3 MILES) TO STATE ROUTE 612 (STUBBS BRIDGE ROAD). CONTINUE NORTHERLY ALONG STATE ROUTE 719 (BELMONT ROAD) FOR 30.5 METERS (100 FEET) TO THE STATION ON THE RIGHT.

STATION STUBBS IS INTERVISIBLE WITH STATION STUBBS AZ. THE STATION IS A 3-1/2 INCH SPOTSYLVANIA COUNTY, VA ALUMINUM SURVEY DISK SET INTO A Poured IN PLACE CONCRETE MONUMENT 8 INCHES IN DIAMETER FLUSH WITH THE GROUND SURFACE AND STAMPED STUBBS 2003.

SKETCH:



DRAWN BY: BCL

CHECKED BY: LLR

DATE: 06/2003

APPROX. SCALE: 1" = 60'

GEOMETRICS
S.P.S., INC.