

# SPOTSYLVANIA COUNTY VIRGINIA 2002 CONTROL SURVEY

JN 102-040

HORIZONTAL DATUM: NAD 83(2007) (REVISED 8-08)  
 VERTICAL DATUM: NAVD 88  
 COORDINATE SYSTEM: VIRGINIA STATE PLANE, NORTH ZONE  
 UNITS: U.S. SURVEY FOOT

HORIZONTAL ORDER: FIRST  
 VERTICAL ORDER: THIRD

| COUNTY                                    | NAME OF STATION           | YEAR                        |
|---|---------------------------|-----------------------------|
| SPOTSYLVANIA                              | SOUTHPOINT                | 2002                        |
| N: 6769453.10                             | LAT: 38° 13' 58.73097" N  | COMBINED FACTOR: 0.99996937 |
| E: 11769249.76                            | LONG: 77° 30' 11.31106" W | ⊖ ANGLE: 0° 37' 19.8"       |
| ELEVATION: 135.73 (ESTABLISHED BY GPS)    |                           |                             |
| DISTANCES AND DIRECTIONS TO AZIMUTH MARKS |                           |                             |
| STATION                                   | GROUND DISTANCE           | TRUE AZIMUTH                |
| SOUTHPOINT AZ                             | 1867.10'                  | 25°08'39"                   |

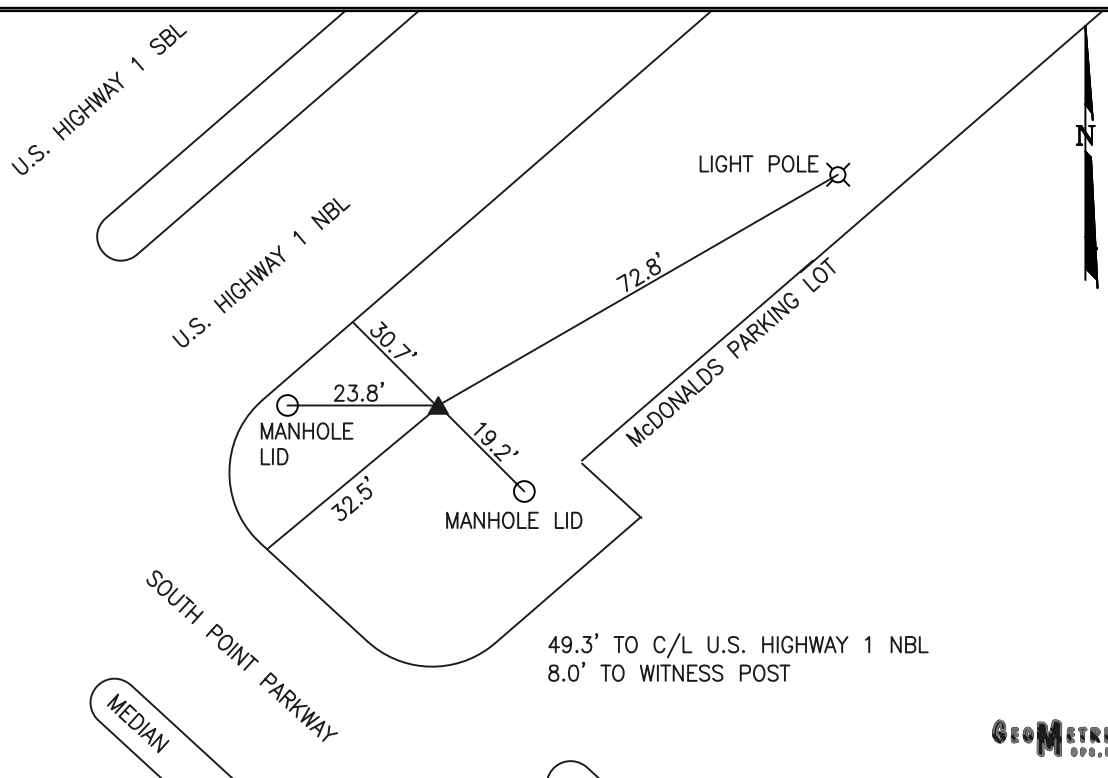
THE STATION IS LOCATED IN SPOTSYLVANIA COUNTY, VIRGINIA NEAR THE INTERSECTION OF US HIGHWAY 1 (JEFFERSON DAVIS HIGHWAY) AND INTERSTATE 95 AT MASSAPONAX.

TO REACH THE STATION FROM THE INTERSECTION OF US HIGHWAY 1 (JEFFERSON DAVIS HIGHWAY) AND US HIGHWAY 17 (MILLS DRIVE) IN MASSAPONAX PROCEED NORTH ALONG US HIGHWAY 1 (JEFFERSON DAVIS HIGHWAY) A DISTANCE OF APPROXIMATELY 0.25 MILE TO ITS INTERSECTION WITH SOUTHPOINT PARKWAY AND THE STATION ON THE RIGHT IN FRONT OF MAC DONALDS.

THE STATION IS A 3 1/2 INCH SPOTSYLVANIA COUNTY, VA ALUMINUM SURVEY DISK SET IN A Poured IN PLACE CONCRETE MONUMENT FLUSH WITH THE GROUND SURFACE AND STAMPED SOUTHPOINT 2002.

THE STATION IS INTERVISIBLE WITH STATION SOUTHPOINT AZ 2002.

SKETCH:



**GEOMETRICS**  
INC., INC.

DRAWN BY: KNT

CHECKED BY: CEN

DATE: 08/2002

APPROX. SCALE: 1" = 30'