

**SPOTSYLVANIA COUNTY VIRGINIA
2006-2007 CONTROL SURVEY (RE-ADJUSTED 2008)**

JN 106-134

HORIZONTAL DATUM: NAD 83(2007)
VERTICAL DATUM: NAVD 88
COORDINATE SYSTEM: VIRGINIA STATE PLANE, NORTH ZONE
UNITS: U.S. SURVEY FOOT

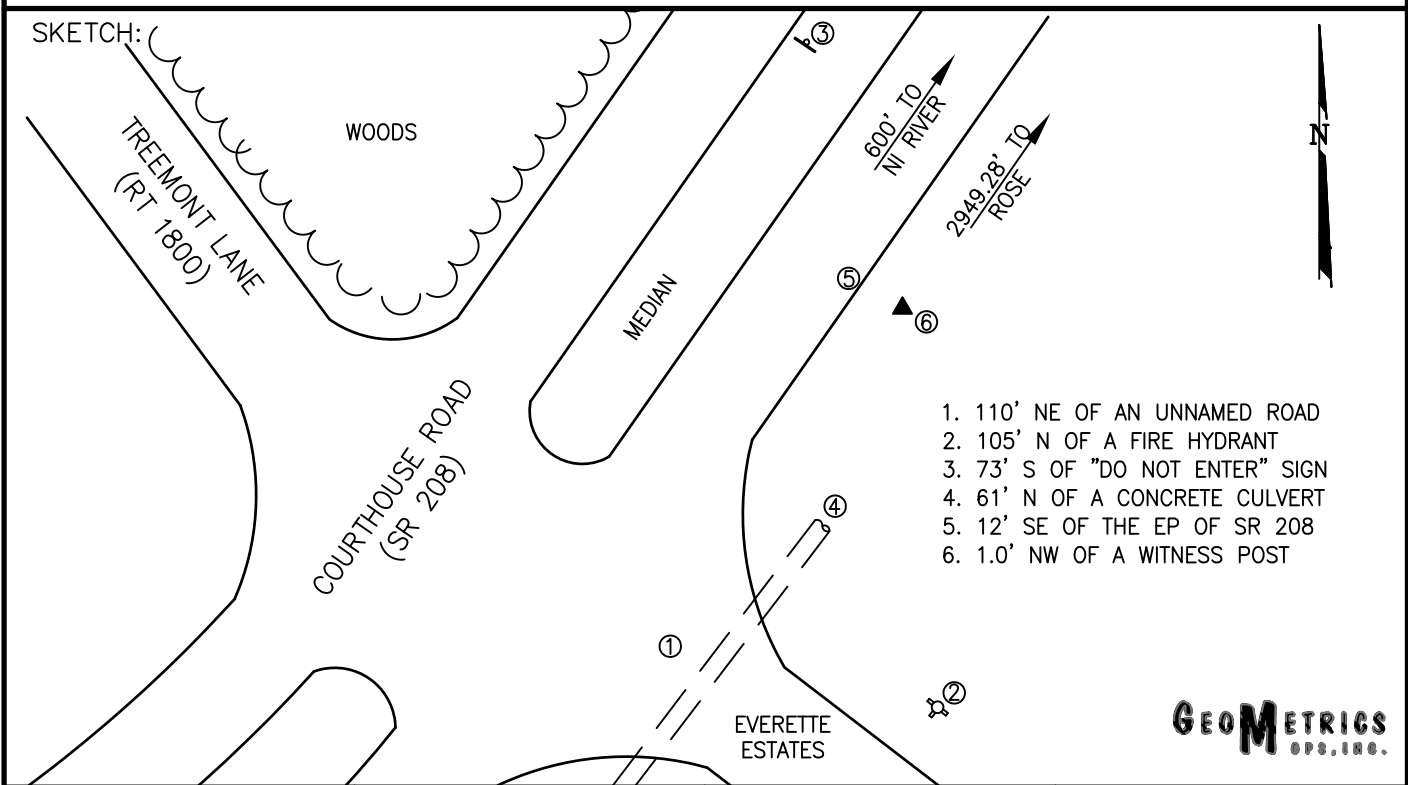
HORIZONTAL ORDER: FIRST
VERTICAL ORDER: THIRD

COUNTY	NAME OF STATION	YEAR
SPOTSYLVANIA	ROSE AZ	2006
N: 6763043.78	LAT: 38° 12' 57.37529" N	COMBINED FACTOR: 0.99996519
E: 11749955.88	LONG: 077° 34' 13.92252" W	⊖ ANGLE: 0° 34' 48"
ELEVATION: 233.90' (ESTABLISHED BY GPS)		
DISTANCES AND DIRECTIONS TO AZIMUTH MARKS		
STATION	GROUND DISTANCE	TRUE AZIMUTH
ROSE	2949.28'	20° 59' 48"

THE STATION IS LOCATED ABOUT 10.1 KM (6.3 MILES) SOUTHWEST OF FREDERICKSBURG AND 2.3 KM (1.4 MILES) NORTH OF SPOTSYLVANIA.

TO REACH THE STATION FROM THE INTERSECTION OF SR 208 (COURTHOUSE ROAD) AND SR 613 (BROCK ROAD), AT THE COURTHOUSE, GO NORTHEAST ON SR 208 FOR 2.3 KM (1.4 MILES) TO ITS INTERSECTION WITH SR 1800 (TREMONT LANE) AND THE STATION ON THE RIGHT, JUST PAST THE INTERSECTION.

THE STATION IS A STANDARD SPOTSYLVANIA COUNTY, VA ALUMINUM SURVEY DISK SET INTO A Poured IN PLACE CONCRETE MONUMENT 10 INCHES IN DIAMETER, FLUSH WITH GROUND SURFACE AND STAMPED ROSE AZ 2006.



1. 110' NE OF AN UNNAMED ROAD
2. 105' N OF A FIRE HYDRANT
3. 73' S OF "DO NOT ENTER" SIGN
4. 61' N OF A CONCRETE CULVERT
5. 12' SE OF THE EP OF SR 208
6. 1.0' NW OF A WITNESS POST

