

SPOTSYLVANIA COUNTY, VIRGINIA  
 E911 GPS SURVEY (RE-ADJUSTED 2008)

W.O. 95007

MAP PROJECTION: LAMBERT

ORDER OF SURVEY: FIRST

NAD 83(2007) \* VIRGINIA STATE PLANE COORDINATE SYSTEM \* NORTH ZONE

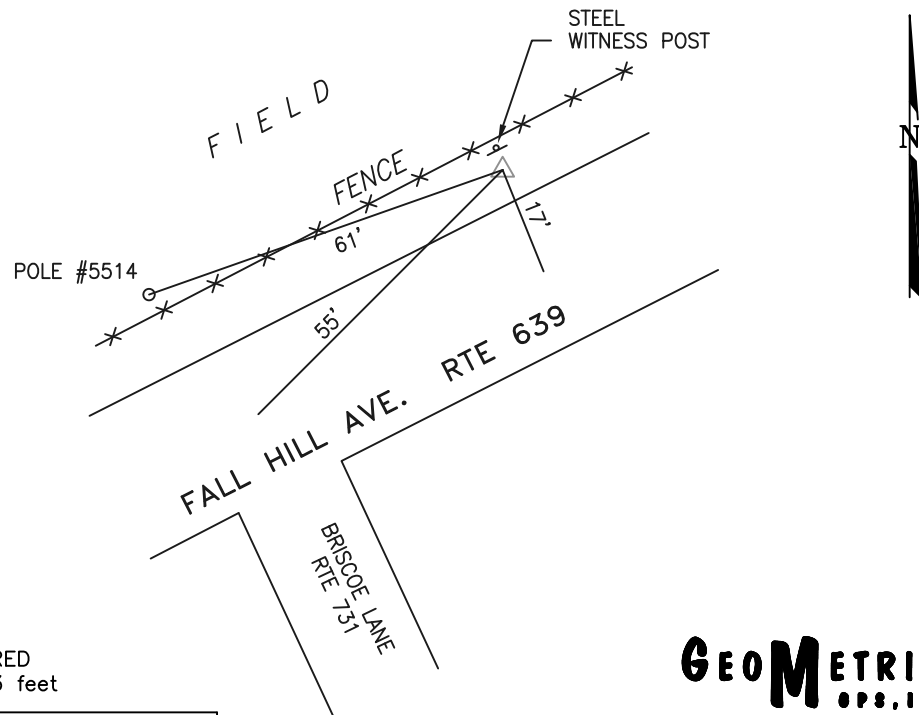
COUNTY		NAME OF STATION		YEAR
SPOTSYLVANIA		RAPP AZ MK		1995
N: 6797965.54	E: 11767167.80	LAT.: 38°18'40.80006"	LONG.: 77° 30'33.54652"	
GRID FACTOR: 0.99996258	SEA LEVEL FACTOR: 0.99999278	⊕ ANGLE: +0° 37'05.89"		
ESTABLISHED BY: GeoMetrics GPS, INC.	YEAR 1995	DISTANCES AND DIRECTIONS TO REFERENCE MARKS AND PROMINENT OBJECTS OBSERVED AT STATION		
		OBJECT	DISTANCE-FT.	MAG. AZIMUTH
VERTICAL DATUM NAVD 88				
ELEVATION (FT.) 257.27				

THE STATION IS LOCATED ABOUT 8.8 KM (5.5 MILES) NORTHEAST OF CHANCELLOR, AND 3.7 KM (2.3 MILES) NORTHWEST OF FREDERICKSBURG.

TO REACH THE STATION FROM THE INTERSECTION OF US HIGHWAY 1 (JEFFERSON DAVIS HIGHWAY) AND US HIGHWAY 17 (WARRENTON ROAD), IN FALMOUTH, GO SOUTH ON US 1 FOR 1.2 KM (0.75 MILE) TO ITS INTERSECTION WITH SR 639 (FALL HILL AVE). TURN RIGHT AND GO WEST ON SR 639 FOR 2.7 KM (1.65 MILES) TO ITS INTERSECTION WITH I-95 BRIDGE. CONTINUE WEST ON SR 639 OVER THE BRIDGE FOR 0.3 KM (0.2 MILE) TO THE STATION ON THE RIGHT.

THE STATION IS A STANDARD CGS BRASS SURVEY DISK SET INTO A POURED IN PLACE CONCRETE MONUMENT, PROJECTING 3" ABOVE THE GROUND SURFACE AND STAMPED RAPP 1959.

SKETCH OF STATION:



THIS SURVEY DATA PREPARED  
 USING 1 meter = 3.280833 feet

PREPARED BY: EJP	DATE: AUG '95
CHECKED BY: DAR	DATE: AUG '95

**GEOMETRICS**  
 ops, inc.  
 355 BUTLER ROAD  
 FREDERICKSBURG, VIRGINIA  
 (540) 372-3499