

# SPOTSYLVANIA COUNTY VIRGINIA 2002 CONTROL SURVEY

JN 102-040

HORIZONTAL DATUM: NAD 83(2007) (REVISED 8-08)  
 VERTICAL DATUM: NAVD 88  
 COORDINATE SYSTEM: VIRGINIA STATE PLANE, NORTH ZONE  
 UNITS: U.S. SURVEY FOOT

HORIZONTAL ORDER: FIRST  
 VERTICAL ORDER: THIRD

COUNTY	NAME OF STATION	YEAR
SPOTSYLVANIA	PONAX AZ	2002
N: 6747364.70	LAT: 38° 10' 20.83975" N	COMBINED FACTOR: 0.99997568
E: 11764984.17	LONG: 77° 31' 07.72753" W	⊖ ANGLE: 0° 36' 44.6"
ELEVATION: 162.56 (ESTABLISHED BY GPS)		
DISTANCES AND DIRECTIONS TO AZIMUTH MARKS		
STATION	GROUND DISTANCE	TRUE AZIMUTH
PONAX	3969.66'	21°19'39"

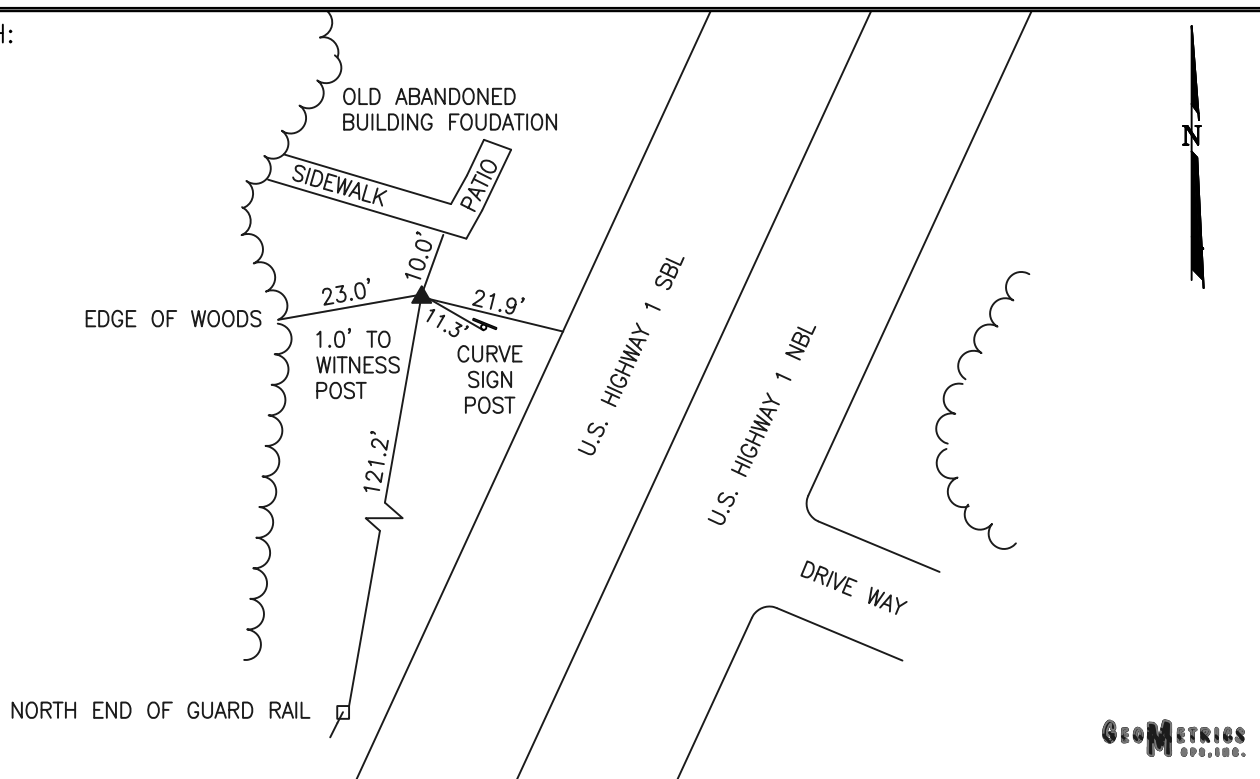
THE STATION IS LOCATED IN SPOTSYLVANIA COUNTY, VIRGINIA APPROXIMATELY 8.0 MILES SOUTH FROM THE CITY OF FREDERICKSBURG.

TO REACH THE STATION FROM THE INTERSECTION OF US HIGHWAY 1 (JEFFERSON DAVIS HIGHWAY) AND US HIGHWAY 17 (MILLS DRIVE) IN MASSAPONAX PROCEED SOUTH ALONG US HIGHWAY 1 (JEFFERSON DAVIS HIGHWAY) A DISTANCE OF APPROXIMATELY 4.0 MILES TO THE STATION ON THE RIGHT.

THE STATION IS A 3 1/2 INCH SPOTSYLVANIA COUNTY, VA ALUMINUM SURVEY DISK SET IN A POURED IN PLACE CONCRETE MONUMENT FLUSH WITH THE GROUND SURFACE AND STAMPED PONAX AZ 2002.

THE STATION IS INTERVISIBLE WITH STATION PONAX 2002.

SKETCH:



DRAWN BY: KNT

CHECKED BY: CEN

DATE: 08/2002

APPROX. SCALE: 1" = 30'

**GEO METRICS**  
INC.