

SPOTSYLVANIA COUNTY VIRGINIA 2002/2003 CONTROL SURVEY

JN 102-080

HORIZONTAL DATUM: NAD 83(2007) (REVISED 8-08)
 VERTICAL DATUM: NAVD 88
 COORDINATE SYSTEM: VIRGINIA STATE PLANE, NORTH ZONE
 UNITS: U.S. SURVEY FOOT

HORIZONTAL ORDER: FIRST
 VERTICAL ORDER: THIRD

COUNTY	NAME OF STATION	YEAR
SPOTSYLVANIA	PECK	1995
N: 6802230.98	LAT: 38° 19' 28.71545"N	COMBINED FACTOR: 0.99995145
E: 11706866.42	LONG: 077° 43' 09.64183"W	∅ ANGLE: 0° 29' 14"
ELEVATION: 313.73' (ESTABLISHED BY GPS)		
DISTANCES AND DIRECTIONS TO AZIMUTH MARKS		
STATION	GROUND DISTANCE	TRUE AZIMUTH
PECK AZ	1309.70'	105° 17' 42"

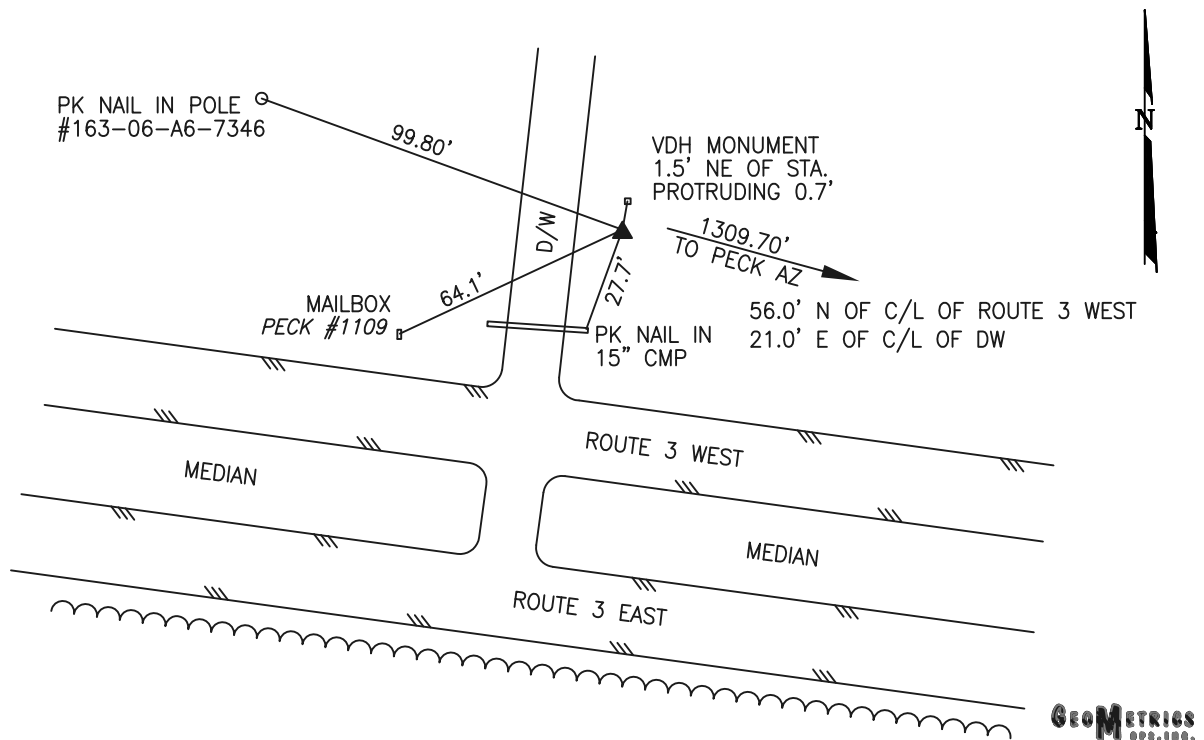
THE STATION IS LOCATED IN WESTERN SPOTSYLVANIA COUNTY, VIRGINIA APPROXIMATELY 12.5 MILES (20.1 KM) WEST NORTHWEST FROM THE CITY OF FREDERICKSBURG.

TO REACH THE STATION FROM THE INTERSECTION OF STATE ROUTE 3 (PLANK ROAD) AND STATE ROUTE 20 (CONSTITUTION HIGHWAY) PROCEED EASTERLY ALONG STATE ROUTE 3 (PLANK ROAD) A DISTANCE OF 0.5 MILE (0.8 KM) AND THE STATION ON THE LEFT.

THE STATION IS A 3 1/2 INCH SPOTSYLVANIA COUNTY, VIRGINIA ALUMINUM SURVEY DISK SET IN A Poured IN PLACE CONCRETE MONUMENT 10 INCHES IN DIAMETER FLUSH WITH THE GROUND SURFACE AND STAMPED PECK 1995

STATION PECK IS INTERVISIBLE WITH STATION PECK AZ.

SKETCH:



GEOMETRICS
INC.

DRAWN BY: BCL

CHECKED BY: DAR

DATE: 02/2003

APPROX. SCALE: 1" = 50'