

SPOTSYLVANIA COUNTY VIRGINIA 2002 CONTROL SURVEY

JN 102-040

HORIZONTAL DATUM: NAD 83(2007) (REVISED 8-08)
 VERTICAL DATUM: NAVD 88
 COORDINATE SYSTEM: VIRGINIA STATE PLANE, NORTH ZONE
 UNITS: U.S. SURVEY FOOT

HORIZONTAL ORDER: FIRST
 VERTICAL ORDER: THIRD

COUNTY	NAME OF STATION	YEAR
SPOTSYLVANIA	PARKSIDE AZ	2002
N: 6757219.72	LAT: 38° 11' 58.56221" N	COMBINED FACTOR: 0.99996722
E: 11762086.32	LONG: 77° 31' 42.70804" W	∅ ANGLE: 0° 36' 22.7"
ELEVATION: 265.58 (ESTABLISHED BY GPS)		
DISTANCES AND DIRECTIONS TO AZIMUTH MARKS		
STATION	GROUND DISTANCE	TRUE AZIMUTH
PARKSIDE	886.34'	301°23'23"

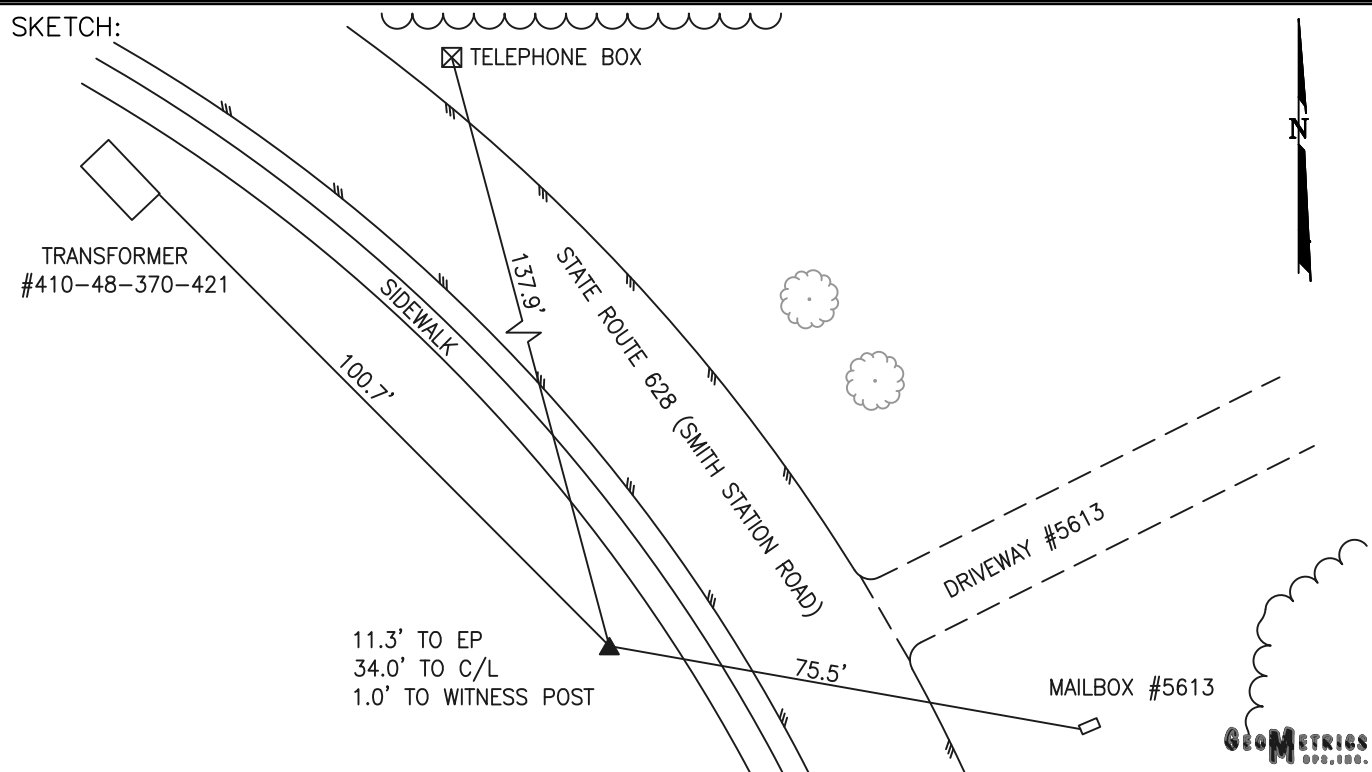
THE STATION IS LOCATED IN SPOTSYLVANIA COUNTY, VIRGINIA APPROXIMATELY 7.0 MILES SOUTH FROM THE CITY OF FREDERICKSBURG.

TO REACH THE STATION FROM THE INTERSECTION OF US HIGHWAY 1 (JEFFERSON DAVIS HIGHWAY) AND US HIGHWAY 17 (MILLS DRIVE) IN MASSAPONAX PROCEED SOUTH ALONG US HIGHWAY 1 (JEFFERSON DAVIS HIGHWAY) A DISTANCE OF APPROXIMATELY 2.5 MILES TO ITS INTERSECTION WITH STATE ROUTE 608 (MASSAPONAX CHURCH ROAD). TURN RIGHT AND PROCEED WEST ALONG STATE ROUTE 608 (MASSAPONAX CHURCH ROAD) A DISTANCE OF APPROXIMATELY 1.0 MILE TO ITS INTERSECTION WITH STATE ROUTE 628 (SMITH STATION ROAD). TURN RIGHT AND PROCEED NORTHWEST ALONG STATE ROUTE 628 (SMITH STATION ROAD) A DISTANCE OF APPROXIMATELY 0.2 MILE TO THE STATION ON THE LEFT ACROSS FROM HOUSE NUMBER 5613.

THE STATION IS A 3 1/2 INCH SPOTSYLVANIA COUNTY, VA ALUMINUM SURVEY DISK SET IN A POURED IN PLACE CONCRETE MONUMENT FLUSH WITH THE GROUND SURFACE AND STAMPED PARKSIDE AZ 2002.

THE STATION IS INTERVISIBLE WITH STATION PARKSIDE 2002.

SKETCH:



DRAWN BY: CEN

CHECKED BY: DAR

DATE: 08/2002

APPROX. SCALE: 1" = 50'