

SPOTSYLVANIA COUNTY VIRGINIA 2007 GEODETIC CONTROL SURVEY

JN 107-065

HORIZONTAL DATUM: NAD 83(2007)
 VERTICAL DATUM: NAVD 88
 COORDINATE SYSTEM: VIRGINIA STATE PLANE, NORTH ZONE
 UNITS: U.S. SURVEY FOOT

HORIZONTAL ORDER: FIRST
 VERTICAL ORDER: THIRD

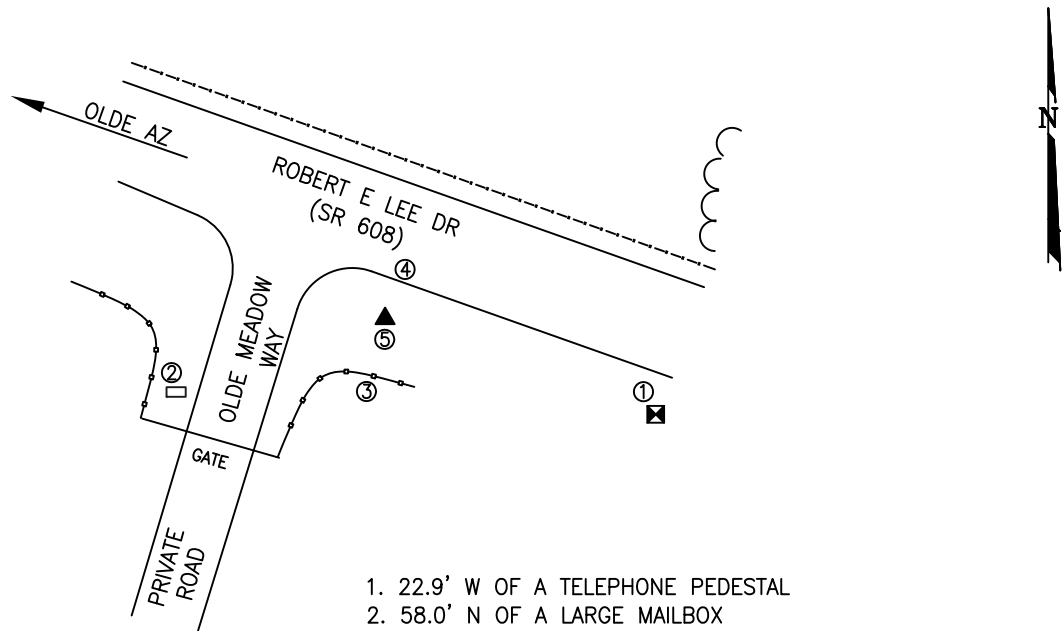
COUNTY	NAME OF STATION	YEAR
SPOTSYLVANIA	OLDE	2007
N: 6759854.17	LAT: 38° 12' 28.81409" N	COMBINED FACTOR: 0.99996359
E: 11718431.12	LONG: 77° 40' 49.27114" W	⊖ ANGLE: 0° 30' 42"
ELEVATION: 319.33' (ESTABLISHED BY GPS)		
DISTANCES AND DIRECTIONS TO AZIMUTH MARKS		
STATION	GROUND DISTANCE	TRUE AZIMUTH
OLDE AZ	960.81	280° 38' 37"

THE STATION IS LOCATED ABOUT 15.6 KM (9.7 MILES) SOUTHEAST OF LOCUST GROVE, AND 8.0 KM (5.0 MILES) WEST OF SPOTSYLVANIA.

TO REACH THE STATION FROM THE INTERSECTION OF SR 208 (COURTHOUSE ROAD) AND SR 613 (BROCK ROAD), AT THE SPOTSYLVANIA COURTHOUSE, GO NORTH ON SR 613 FOR 0.8 KM (0.5 MILE) TO ITS INTERSECTION WITH SR 608 (ROBERT E LEE DRIVE). TURN LEFT AND GO WEST ON SR 608 FOR 8.0 KM (5.0 MILES) TO ITS INTERSECTION WITH OLDE MEADOW WAY AND THE STATION ON THE LEFT AT THE INTERSECTION.

THE STATION IS A STANDARD SPOTSYLVANIA COUNTY, VA ALUMINUM SURVEY DISK SET INTO A POURED IN PLACE CONCRETE MONUMENT 10 INCHES IN DIAMETER, FLUSH WITH GROUND SURFACE AND STAMPED OLDE 2007.

SKETCH:



1. 22.9' W OF A TELEPHONE PEDESTAL
2. 58.0' N OF A LARGE MAILBOX
3. 16.0' S OF A PVC FENCE
4. 10.0' S OF THE EDGE OF PAVEMENT OF SR 608
5. 1.0' N OF WITNESS POST

GEOMETRICS
GPS, INC.

DRAWN BY: KLS

CHECKED BY: DAR

DATE: 06/2008

APPROX. SCALE: 1" = 50'