

SPOTSYLVANIA COUNTY VIRGINIA 2002 CONTROL SURVEY

JN 102-040

HORIZONTAL DATUM: NAD 83(2007) (REVISED 8-08)
 VERTICAL DATUM: NAVD 88
 COORDINATE SYSTEM: VIRGINIA STATE PLANE, NORTH ZONE
 UNITS: U.S. SURVEY FOOT

HORIZONTAL ORDER: FIRST
 VERTICAL ORDER: THIRD

COUNTY	NAME OF STATION	YEAR
SPOTSYLVANIA	MARYLEE AZ	2002
N: 6771942.22	LAT: 38° 14' 21.20966" N	COMBINED FACTOR: 0.99997125
E: 11788415.87	LONG: 77° 26' 10.75653" W	⊖ ANGLE: 0° 39' 49.9"
ELEVATION: 81.38 (ESTABLISHED BY GPS)		
DISTANCES AND DIRECTIONS TO AZIMUTH MARKS		
STATION	GROUND DISTANCE	TRUE AZIMUTH
MARYLEE	3376.35'	207°38'41"

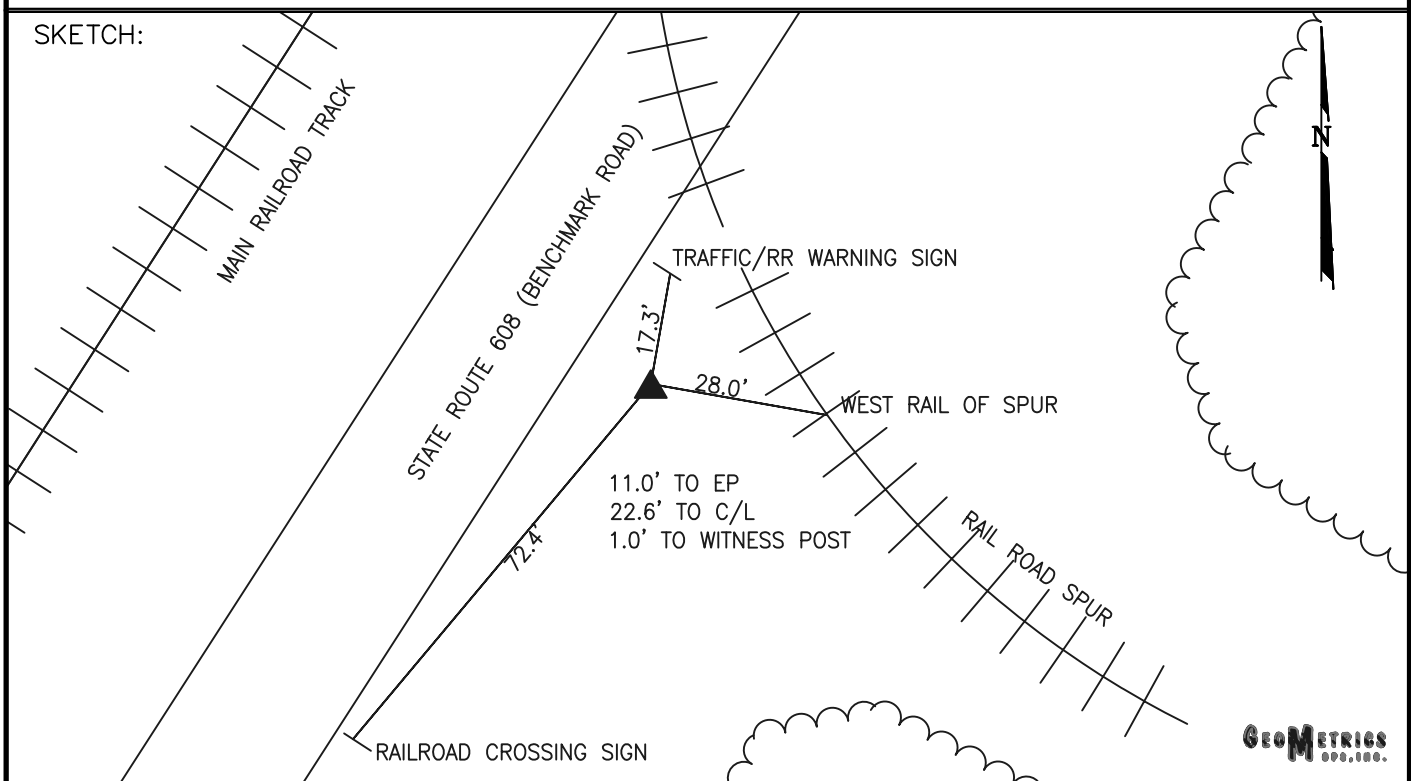
THE STATION IS LOCATED IN SPOTSYLVANIA COUNTY, VIRGINIA APPROXIMATELY 4.0 MILES SOUTHEAST FROM THE CITY OF FREDERICKSBURG.

TO REACH THE STATION FROM THE INTERSECTION OF US HIGHWAY 1 (JEFFERSON DAVIS HIGHWAY) AND US HIGHWAY 17 (MILLS DRIVE) IN MASSAPONAX PROCEED EAST ALONG US HIGHWAY 17 (MILLS DRIVE) APPROXIMATELY 4.0 MILES TO ITS INTERSECTION WITH STATE ROUTE 608 (BENCHMARK ROAD). TURN LEFT AND PROCEED NORTH ALONG STATE ROUTE 608 (BENCHMARK ROAD) A DISTANCE OF APPROXIMATELY 1.5 MILES TO THE STATION ON THE RIGHT.

THE STATION IS A 3 1/2 INCH SPOTSYLVANIA COUNTY, VA ALUMINUM SURVEY DISK SET IN A POURED IN PLACE CONCRETE MONUMENT FLUSH WITH THE GROUND SURFACE AND STAMPED MARYLEE AZ 2002.

THIS STATION IS INTERVISIBLE WITH STATION MARYLEE 2002.

SKETCH:



DRAWN BY: KNT

CHECKED BY: CEN

DATE: 08/2002

APPROX. SCALE: 1" = 30'

GEOMETRICS
CORP., INC.