

SPOTSYLVANIA COUNTY VIRGINIA 2007 GEODETIC CONTROL SURVEY

JN 107-065

HORIZONTAL DATUM: NAD 83(2007)
 VERTICAL DATUM: NAVD 88
 COORDINATE SYSTEM: VIRGINIA STATE PLANE, NORTH ZONE
 UNITS: U.S. SURVEY FOOT

HORIZONTAL ORDER: FIRST
 VERTICAL ORDER: THIRD

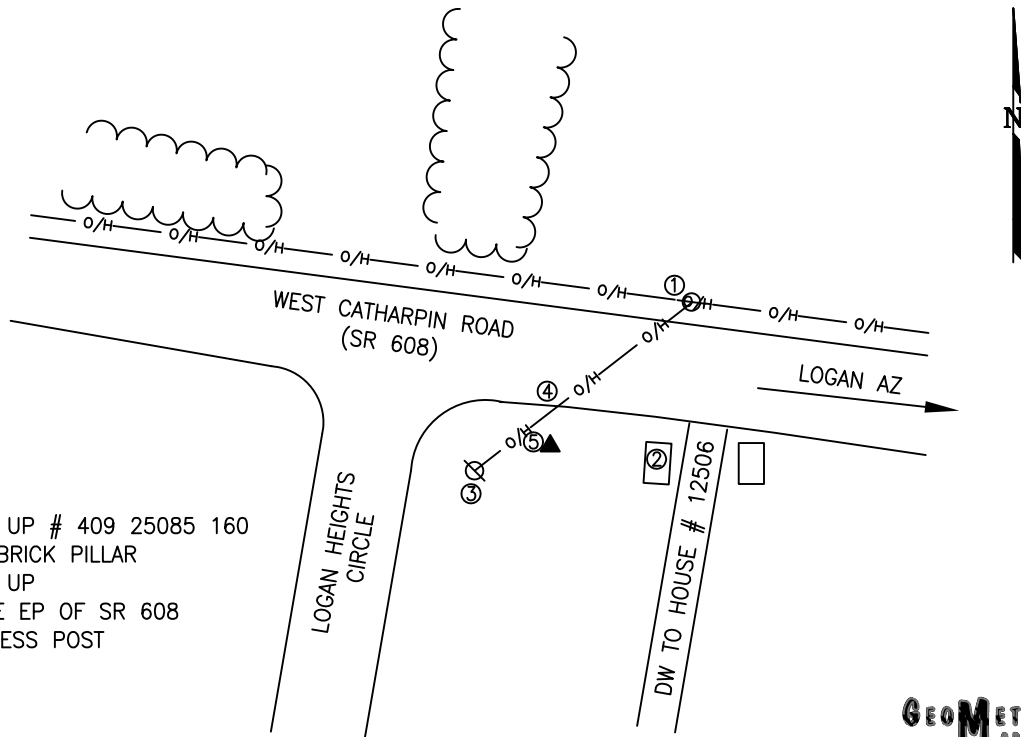
COUNTY	NAME OF STATION	YEAR
SPOTSYLVANIA	LOGAN	2007
N: 6763844.51	LAT: 38° 13' 10.36033" N	COMBINED FACTOR: 0.99995873
E: 11693292.24	LONG: 77° 46' 03.81993" W	⊖ ANGLE: 0° 27' 25"
ELEVATION: 391.57' (ESTABLISHED BY GPS)		
DISTANCES AND DIRECTIONS TO AZIMUTH MARKS		
STATION	GROUND DISTANCE	TRUE AZIMUTH
LOGAN AZ	1253.20	104° 06' 22"

THE STATION IS LOCATED ABOUT 15.8 KM (9.8 MILES) WEST OF SPOTSYLVANIA, AND 10.0 KM (6.2 MILES) SOUTH OF LOCUST GROVE.

TO REACH THE STATION FROM THE INTERSECTION OF SR 208 (COURTHOUSE ROAD) AND SR 613 (BROCK ROAD), AT THE SPOTSYLVANIA COURTHOUSE, GO NORTH ON SR 613 FOR 0.8 KM (0.5 MILE) TO ITS INTERSECTION WITH SR 608 (ROBERT E LEE DRIVE). TURN LEFT AND GO WEST ON SR 608 FOR 7.1 KM (4.4 MILES) TO ITS INTERSECTION WITH SR 649 (MILL POND ROAD). CONTINUE WEST ON SR 608 FOR 4.2 KM (2.6 MILES) TO ITS INTERSECTION WITH SR 608 (WEST CATHARPIN ROAD). TURN LEFT AND GO WEST ON SR 608 FOR 5.1 KM (3.2 MILES) TO THE STATION ON THE LEFT AT THE INTERSECTION.

THE STATION IS A STANDARD SPOTSYLVANIA COUNTY, VA ALUMINUM SURVEY DISK SET INTO A POURED IN PLACE CONCRETE MONUMENT 10 INCHES IN DIAMETER, FLUSH WITH GROUND SURFACE AND STAMPED LOGAN 2007.

SKETCH:



1. 52.0' SW OF A UP # 409 25085 160
2. 25.0' W OF A BRICK PILLAR
3. 21.0' NE OF A UP
4. 10.0' S OF THE EP OF SR 608
5. 1.0' E OF WITNESS POST

GEOMETRICS
GPS, INC.

DRAWN BY: KLS

CHECKED BY: DAR

DATE: 06/2008

APPROX. SCALE: 1" = 50'