

# SPOTSYLVANIA COUNTY VIRGINIA 2002/2003 CONTROL SURVEY

JN 102-080

HORIZONTAL DATUM: NAD 83(2007) (REVISED 8-08)  
 VERTICAL DATUM: NAVD 88  
 COORDINATE SYSTEM: VIRGINIA STATE PLANE, NORTH ZONE  
 UNITS: U.S. SURVEY FOOT

HORIZONTAL ORDER: FIRST  
 VERTICAL ORDER: THIRD

COUNTY	NAME OF STATION	YEAR
SPOTSYLVANIA	LAUREL HILL AZ	2002
N: 6797892.98	LAT: 38° 18' 44.88952"N	COMBINED FACTOR: 0.99994995
E: 11717828.12	LONG: 077° 40' 52.57544"W	∅ ANGLE: 0° 30' 40"
ELEVATION: 368.43' (ESTABLISHED BY GPS)		
DISTANCES AND DIRECTIONS TO AZIMUTH MARKS		
STATION	GROUND DISTANCE	TRUE AZIMUTH
LAUREL HILL	2085.64'	312° 04' 57"

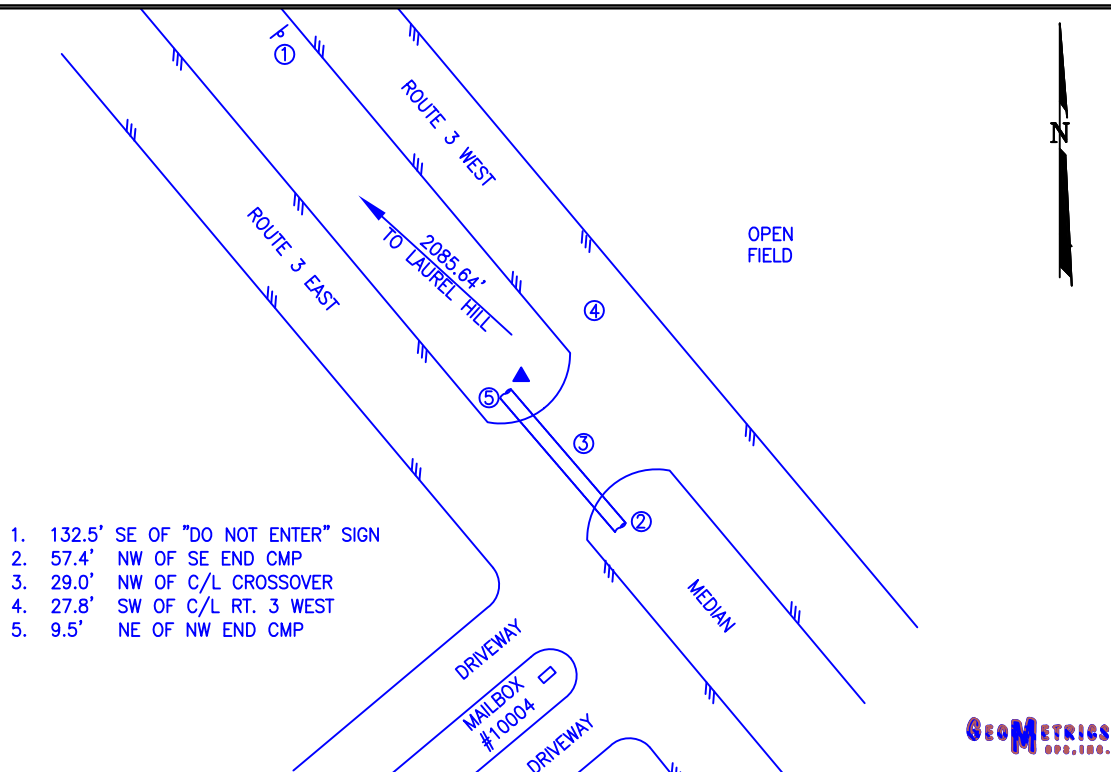
THE STATION IS LOCATED IN WESTERN SPOTSYLVANIA COUNTY, VIRGINIA, APPROXIMATELY 11.0 MILES (17.7 KM) NORTHWEST FROM THE CITY OF FREDERICKSBURG.

TO REACH THE STATION FROM THE INTERSECTION OF STATE ROUTE 3 (PLANK ROAD) AND STATE ROUTE 20 (CONSTITUTION HIGHWAY) PROCEED EASTERLY ALONG STATE ROUTE 3 (PLANK ROAD) A DISTANCE OF 2.75 MILES (4.4 KM) TO THE STATION ON THE LEFT IN THE MEDIAN ON THE WEST SIDE OF THE CROSSOVER.

THE STATION IS A 3 1/2 INCH SPOTSYLVANIA COUNTY ALUMINUM SURVEY DISK, SET IN A POURED IN PLACE CONCRETE MONUMENT, 10 INCHES IN DIAMETER, FLUSH WITH THE GROUND SURFACE AND STAMPED LAUREL HILL AZ 2002.

STATION LAUREL HILL AZ IS INTERVISIBLE WITH STATION LAUREL HILL.

SKETCH:



1. 132.5' SE OF "DO NOT ENTER" SIGN
2. 57.4' NW OF SE END CMP
3. 29.0' NW OF C/L CROSSOVER
4. 27.8' SW OF C/L RT. 3 WEST
5. 9.5' NE OF NW END CMP

