

SPOTSYLVANIA COUNTY, VIRGINIA  
 E911 GPS SURVEY REVISED 10/2008

W.O. 95007

MAP PROJECTION: LAMBERT

ORDER OF SURVEY: FIRST

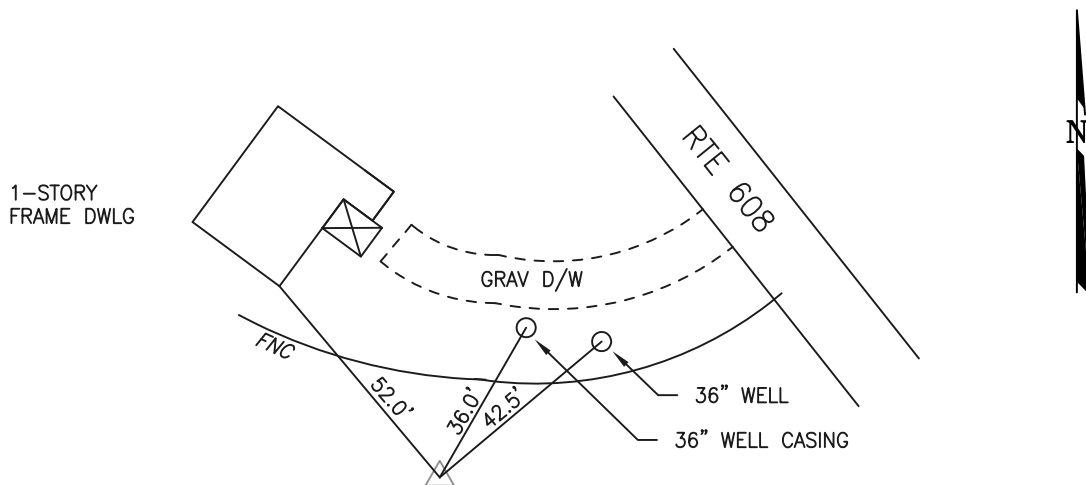
NAD 83(2007) \* VIRGINIA STATE PLANE COORDINATE SYSTEM \* NORTH ZONE

COUNTY		NAME OF STATION		YEAR
SPOTSYLVANIA		HOGE		1995
N: 6759435.48	E: 11730755.59	LAT.: 38°12'23.55904"N	LONG.: 77°38'14.91771"W	
GRID FACTOR: 0.99997395	SEA LEVEL FACTOR: 0.99999249		ϕ ANGLE: +0°32'17.94"	
ESTABLISHED BY: GeoMetrics GPS, INC.	YEAR 1995	DISTANCES AND DIRECTIONS TO REFERENCE MARKS AND PROMINENT OBJECTS OBSERVED AT STATION		
		OBJECT	DISTANCE-FT.	MAG. AZIMUTH
VERTICAL DATUM NAVD 88				
ELEVATION (FT.) 262.96				
RECOVERED: OCT 2000				

DESCRIPTION OF STATION:

The station is a Spotsylvania County survey disk set in concrete stamped HOGE 1995 located on private property in Spotsylvania County, Virginia, approximately 2.5 miles west of Spotsylvania Court House. To reach the station from the intersection of Route 208 (Courthouse Road) and Route 613 (Brock Road) proceed northwest along Route 613 (Brock Road) 0.5 miles to its intersection with Route 608 (Robert E Lee Drive). Turn left and proceed southwest along Route 608 (Robert E Lee Drive) 2.5 miles to its intersection with a gravel driveway. Turn left on the driveway and proceed approximately 150 feet and the station is on the left. A new house has been built approximately 50 feet south of the monument. Witness post set N50°E at 42.0 feet. Note: Seek property owner permission prior to using this monument. Monument is now located in someone's front yard.

SKETCH OF STATION:



THIS SURVEY DATA PREPARED  
 USING 1 meter = 3.280833 feet

**GEOMETRICS**  
 ops, inc.

236 CAMBRIDGE ROAD  
 FREDERICKSBURG, VIRGINIA  
 (540) 372-3499

PREPARED BY: EJP	DATE: AUG '95
CHECKED BY: DAR	DATE: AUG '95

NOTE:  
 IN 2008 THE COORDINATES WERE CONVERTED TO  
 NAD83(2007) BY APPLYING A COMPUTED SHIFT