

**SPOTSYLVANIA COUNTY VIRGINIA  
2005 CONTROL SURVEY**

JN 104-085

HORIZONTAL DATUM: NAD 83(2007) (REVISED 8-08)  
 VERTICAL DATUM: NAVD 88  
 COORDINATE SYSTEM: VIRGINIA STATE PLANE, NORTH ZONE  
 UNITS: U.S. SURVEY FOOT

HORIZONTAL ORDER: FIRST  
 VERTICAL ORDER: THIRD

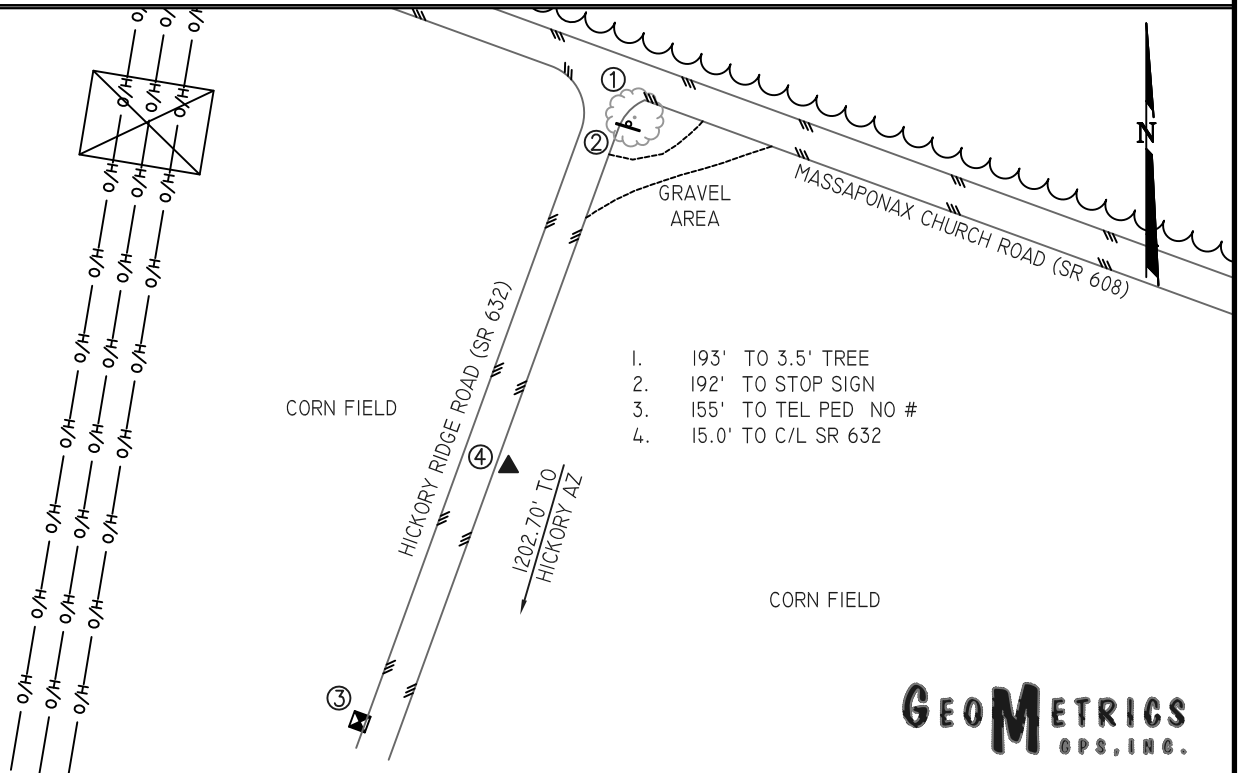
COUNTY	NAME OF STATION	YEAR
SPOTSYLVANIA	HICKORY	2005
N: 6752304.93	LAT: 38° 11' 10.99871" N	COMBINED FACTOR: 0.99997651
E: 11752160.69	LONG: 077° 33' 47.67060" W	⊖ ANGLE: 0° 35' 05"
ELEVATION: 321.19' (ESTABLISHED BY GPS)		
DISTANCES AND DIRECTIONS TO AZIMUTH MARKS		
STATION	GROUND DISTANCE	TRUE AZIMUTH
HICKORY AZ	1202.70	192°53'48"

THE STATION IS LOCATED IN SPOTSYLVANIA COUNTY, VIRGINIA, APPROXIMATELY 6.8 KM (4.2 MILES) NORTH OF THORNBURG, AND 2.7 KM (1.7 MILES) SOUTHEAST OF THE SPOTSYLVANIA COUNTY COURTHOUSE.

TO REACH THE STATION FROM THE INTERSECTION OF SR 208 (COURTHOUSE ROAD) AND SR 613 (BROCK ROAD) AT THE SPOTSYLVANIA COUNTY COURTHOUSE, GO SOUTHEAST ON SR 208 FOR 0.8 KM (0.5 MILE) TO ITS INTERSECTION WITH SR 608 (MASSAPONAX CHURCH ROAD). TURN LEFT AND GO EAST ON SR 608 FOR 2.4 KM (1.5 MILES) TO ITS INTERSECTION WITH SR 632 (HICKORY RIDGE ROAD). TURN RIGHT AND GO SOUTH ON SR 632 FOR 61.0 METERS (200 FEET) TO THE STATION ON THE LEFT.

THE STATION IS A SPOTSYLVANIA COUNTY, VA ALUMINUM SURVEY DISK SET INTO A POURED IN PLACE CONCRETE MONUMENT 10 INCHES IN DIAMETER, FLUSH WITH THE GROUND SURFACE AND STAMPED HICKORY 2005. STATION HICKORY IS INTER-VISIBLE WITH STATION HICKORY AZ.

SKETCH:



**GEOMETRICS**  
GPS, INC.

DRAWN BY: BCL

CHECKED BY: DAR

DATE: 06/2005

APPROX. SCALE: 1" = 100'