

SPOTSYLVANIA COUNTY, VIRGINIA
E911 GPS SURVEY REVISED 10/2008

W.O. 95007

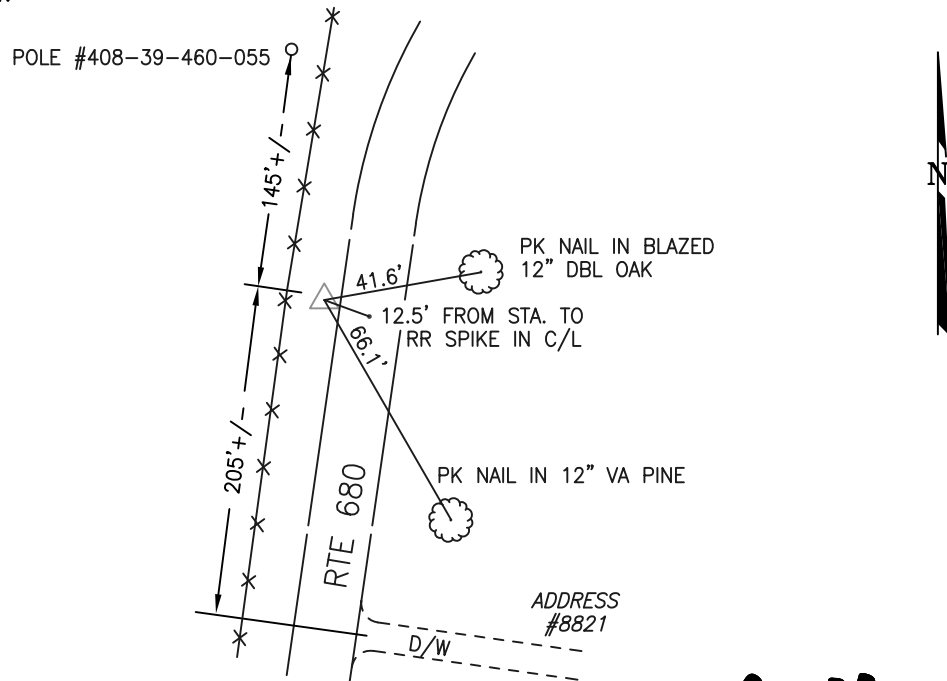
MAP PROJECTION: LAMBERT ORDER OF SURVEY: FIRST
NAD 83(2007) * VIRGINIA STATE PLANE COORDINATE SYSTEM * NORTH ZONE

COUNTY		NAME OF STATION		YEAR
SPOTSYLVANIA		GRANITE		1995
N: 6757224.15	E: 11673224.49	LAT.: 38°12'06.42243"N	LONG.: 77°50'15.87470"W	
GRID FACTOR: 0.99997454	SEA LEVEL FACTOR: 0.99998184		ϕ ANGLE: +0°24'47.98"	
ESTABLISHED BY: GeoMetrics GPS, INC.	YEAR 1995	DISTANCES AND DIRECTIONS TO REFERENCE MARKS AND PROMINENT OBJECTS OBSERVED AT STATION		
		OBJECT	DISTANCE-FT.	MAG. AZIMUTH
VERTICAL DATUM NAVD 88				
ELEVATION (FT.) 485.23				
RECOVERED: OCT 2000				

DESCRIPTION OF STATION:

The station is a Spotsylvania County survey disk set in concrete stamped GRANITE 1995 located in Spotsylvania County, Virginia, approximately 2.0 miles south of Paytes. To reach the station from the intersection of Route 601 (Lawyers Road) and Route 608 (West Catharpin Road) at Paytes proceed south along Route 601 (Lawyers Road) 1.3 miles to its intersection with Route 680 (Granite Springs Road). Turn left and proceed south along Route 680 0.8 miles to the station on the right. Witness post set N60°W at 6.5 feet.

SKETCH OF STATION:



THIS SURVEY DATA PREPARED
USING 1 meter = 3.280833 feet

GEO METRICS
GPS, INC.

236 CAMBRIDGE ROAD
FREDERICKSBURG, VIRGINIA
(540) 372-3499

PREPARED BY: EJP	DATE: AUG '95
CHECKED BY: DAR	DATE: AUG '95

NOTE:
IN 2008 THE COORDINATES WERE CONVERTED TO
NAD83(2007) BY APPLYING A COMPUTED SHIFT