

SPOTSYLVANIA COUNTY, VIRGINIA
 GEODETIC SURVEY CONTROL REVISED 10/2008

MAP PROJECTION: LAMBERT

HORIZONTAL ORDER OF SURVEY: THIRD

NAD 83(2007) * VIRGINIA STATE PLANE COORDINATE SYSTEM * NORTH ZONE

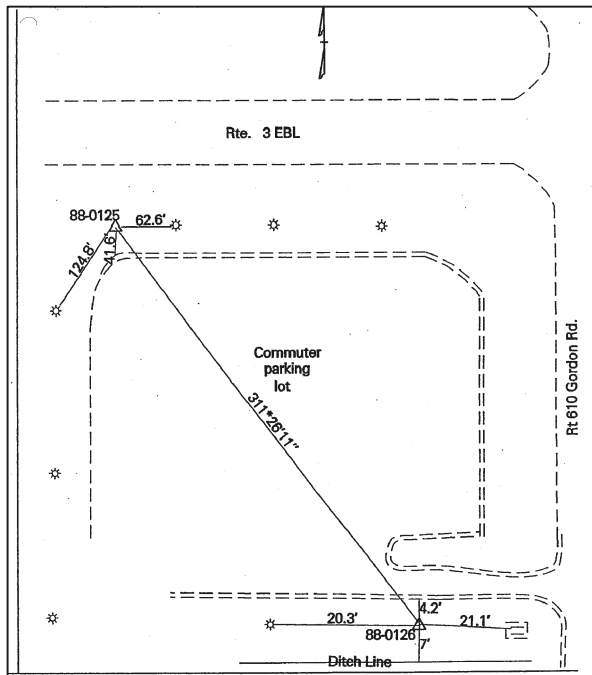
| | | | | |
|---------------------------|-----------------------------|--|-------------------------|--------------|
| COUNTY | | NAME OF STATION | | YEAR |
| SPOTSYLVANIA | | 88-0126 | | 2000 |
| N: 6789744.07 | E: 11752233.75 | LAT.: 38°17'21.08156"N | LONG.: 77°33'41.96265"W | |
| GRID FACTOR: 0.9999647061 | COMBINED FACTOR: 0.99996978 | | ϕ ANGLE: +0°35'08" | |
| ESTABLISHED BY: VDOT | YEAR 1999 | DISTANCES AND DIRECTIONS TO REFERENCE MARKS AND PROMINENT OBJECTS OBSERVED AT STATION | | |
| | | OBJECT | DISTANCE-FT. | AZIMUTH |
| VERTICAL DATUM | | 88-0125 | Unknown | 311° 26' 11" |
| ELEVATION (FT.) | | | | |
| VERTICAL ORDER: THIRD | | | | |

DESCRIPTION OF STATION:

Standard metal VDOT disk stamped 88-0126, set in concrete 0.10' below the ground surface.

To reach this monument from the Interstate 95 overpass proceed west on Route 3 (Plank Road) 3.0 miles. This will be at the Commuter Lot @ Route 627 (Gordon Road) and Route 3 (Plank Road) west of Five Mile Fork. Monument is located in the southeast quadrant of the commuter lot.

SKETCH OF STATION:



THIS SURVEY DATA PREPARED
 USING 1 meter = 39.37 inches

NOTE:

COORDINATE AND ELEVATION DATA LISTED ABOVE IS
 CONVERTED TO NAD83/93 AND NAVD88 BY USING
 CORPSCON. IN 2008 THE COORDINATES WERE CONVERTED
 TO NAD83(2007) BY APPLYING A COMPUTED SHIFT.

GEOMETRICS
 OPS, INC.

236 CAMBRIDGE STREET
 FREDERICKSBURG, VIRGINIA
 (540) 372-3499

| | |
|------------------|---------------|
| PREPARED BY: KRO | DATE: JAN '01 |
| CHECKED BY: DAR | DATE: JAN '01 |