

# SPOTSYLVANIA COUNTY VIRGINIA 2003 CONTROL SURVEY

JN 103-009

HORIZONTAL DATUM: NAD 83(2007) (REVISED 8-08)  
 VERTICAL DATUM: NAVD 88  
 COORDINATE SYSTEM: VIRGINIA STATE PLANE, NORTH ZONE  
 UNITS: U.S. SURVEY FOOT

HORIZONTAL ORDER: FIRST  
 VERTICAL ORDER: THIRD

COUNTY	NAME OF STATION	YEAR
SPOTSYLVANIA	24 D	2003
N: 6724843.16	LAT: 38° 06' 44.85253" N	COMBINED FACTOR: 0.99997362
E: 11692858.93	LONG: 77° 46' 13.13388" W	∅ ANGLE: 0° 27' 19"
ELEVATION: 385.94' (ESTABLISHED BY GPS)		
DISTANCES AND DIRECTIONS TO AZIMUTH MARKS		
STATION	GROUND DISTANCE	TRUE AZIMUTH
FENTON	1731.99'	33° 46' 18"

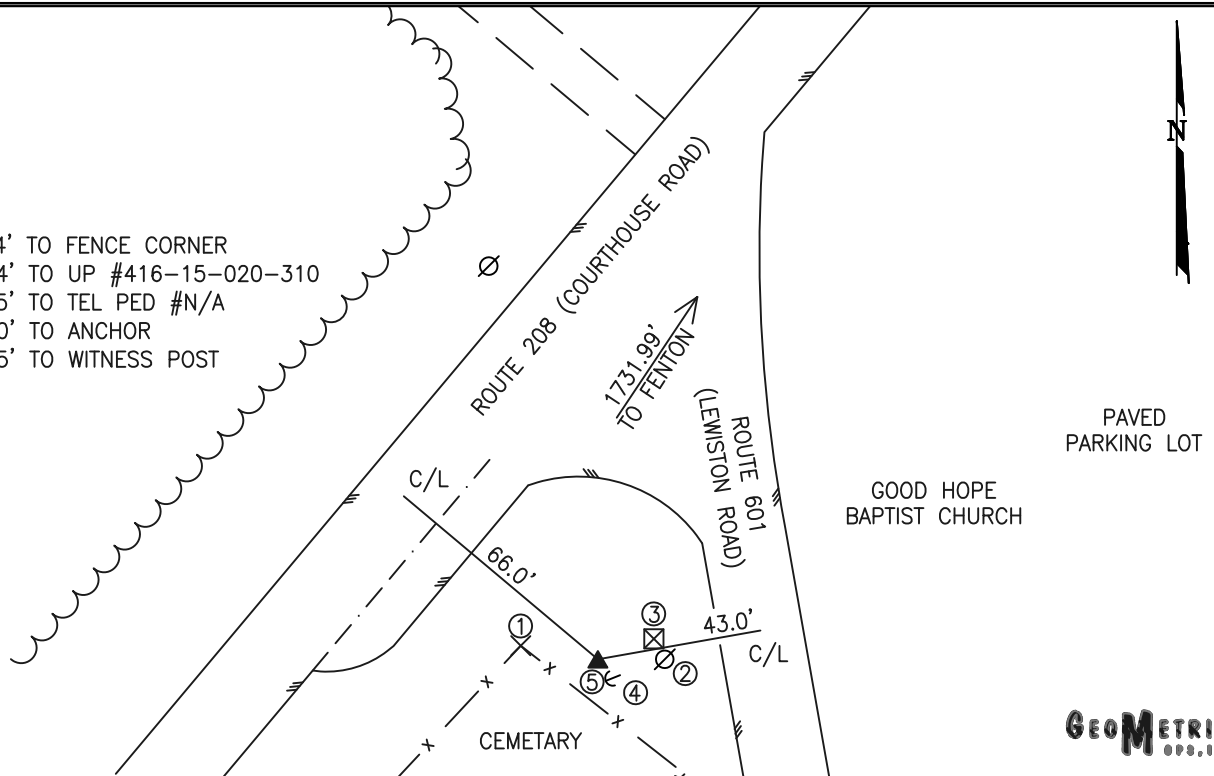
THE STATION IS LOCATED IN SOUTHWESTERN SPOTSYLVANIA COUNTY, VIRGINIA ABOUT 21 MILES SOUTHWEST OF FREDERICKSBURG, 11 MILES SOUTHWEST OF THE SPOTSYLVANIA COUNTY COURTHOUSE.

TO REACH THE STATION FROM THE INTERSECTION OF STATE ROUTE 606 (MORRIS ROAD) AND US HIGHWAY 1 (JEFFERSON DAVIS HIGHWAY) IN THORNBURG GO WESTERLY ON STATE ROUTE 606 FOR 7.2 KM (4.5 MILES) TO AN INTERSECTION. CONTINUE AND GO NORTHWESTERLY ON STATE ROUTE 208 (COURTHOUSE ROAD) FOR 3.7 KM (2.3 MILES) TO STATE ROUTE 648 (BLOCKHOUSE ROAD). CONTINUE NORTHWESTERLY ON STATE ROUTE 208 FOR 1.9 KM (1.2 MILES) TO AN INTERSECTION. TURN LEFT AND GO SOUTHWESTERLY ON STATE ROUTE 208 FOR 6.4 KM (4.0 MILES) TO STATE ROUTE 602 (MASSEY ROAD) AND A SHELL GAS STATION ON THE RIGHT. CONTINUE SOUTHWESTERLY ON STATE ROUTE 208 FOR 4.8 KM (3.0 MILES) TO STATE ROUTE 601 (LAWYERS ROAD). CONTINUE SOUTHWESTERLY ON STATE ROUTE 208 0.5 KM (0.3 MILES) TO STATE ROUTE 601 (LEWISTON ROAD) AND THE STATION ON THE LEFT IN THE SOUTHWEST CORNER OF THE INTERSECTION. STATION 24 D IS INTERVISIBLE WITH STATION FENTON.

THE STATION IS A 3-1/2 INCH U.S. GEOLOGICAL SURVEY ALUMINUM SURVEY DISK SET IN A 6 INCH SQUARE CONCRETE MONUMENT FLUSH WITH THE GROUND SURFACE AND STAMPED 24 D 387 1929.

SKETCH:

1. 20.4' TO FENCE CORNER
2. 17.4' TO UP #416-15-020-310
3. 15.5' TO TEL PED #N/A
4. 6.0' TO ANCHOR
5. 1.5' TO WITNESS POST



**GEOMETRICS**  
INC.